

# **OMAHA**

WHOLESALE HARDWARE

## **Glazing Contractor Product Guide**

- **LARGE INVENTORY OF HARDWARE**
- **Competitive Prices**
- **Same day shipping on stock items**
- **Free shipping on orders over \$1000**
- **Quotes available on large projects  
with supplied hardware schedule**

**omahawh.com**

**owh@jhcomaha.com**  
**Phone: 800.238.4566**  
**Fax: 800.538.4566**

## TABLE OF CONTENTS

- 4** ARCHITECTURAL HINGES
  - HAGER
  - PBB
  - MARKAR
  - HINGE DOCTOR
  
- 5-7** CONTINUOUS HINGES
  - HAGER ROTON
  
- 8-9** PIVOTS
  - GLOBAL
  
- 10-18** LOCKS
  - COMMERCIAL LOCKS
    - BEST
    - FALCON
    - SARGENT
    - SCHLAGE
    - SIMPLEX
    - DORMA COMMERCIAL HARDWARE
  - ALUMINUM STOREFRONT
    - ADAMS RITE
    - SX
  
- 19-21** CYLINDERS & HOUSINGS
  - BEST
  - ILCO
  - KSP
  
- 22-30** EXIT DEVICES/MULLIONS
  - ADAMS RITE
  - DETEX
  - FALCON (DOR-O-MATIC)
  - DORMA COMMERCIAL HARDWARE
  - VON DUPRIN

PRICES LISTED SUBJECT TO CHANGE

## TABLE OF CONTENTS

- 31-40** CLOSERS
- FALCON
  - LCN
  - NORTON
  - DORMA COMMERCIAL
- 41-58** MISCELLANEOUS HARDWARE ITEMS
- FLAT GOODS
    - IVES
    - BURNS MANUFACTURING
    - ROCKWOOD
    - LATCH-GARD
    - HOUDINI
    - NATIONAL GUARD PRODUCTS (NGP)
  - ELECTRIFIED HARDWARE
    - ADAMS RITE
    - HES
    - VON DUPRIN
- 59-61** HOLLOW METAL FRAMES AND DOORS  
BY STEELCRAFT
- 62** HANDING CHART
- 63** CONTACT INFORMATION
- 64-66** NOTES
- 67** LINE SHEET

PRICES LISTED SUBJECT TO CHANGE

ARCHITECTURAL HINGES

HAGER



**HAGER BB1279**

**Ball Bearing - Standard Weight**

*Two ball bearings*

*Steel with steel pin (ANSI A8112) For use on medium weight doors requiring medium frequency service.*

**BB1279 4-1/2" x 4-1/2" US26D**

**\$12.00**

**BB1279 4-1/2" x 4-1/2" US10A**

**\$15.00**



**HAGER BB1168**

**Ball Bearing - Heavy Weight**

*Four ball bearings*

*Steel with steel pin (ANSI A8111) For use on heavy weight doors requiring high frequency service.*

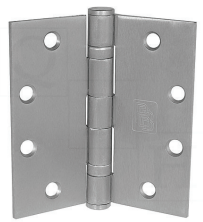
**BB1168 4-1/2" x 4-1/2" US26D**

**\$20.00**

**BB1168 4-1/2" x 4-1/2" US10A**

**\$25.00**

PBB



**PBB**

**Full Mortise Template Ball Bearing Hinges**

*PBB, Inc. template hinges are manufactured to close tolerances and meet all specifications and requirements set by all American National Standards Institute (ANSI). 4-1/2" x 4-1/2"*

**BB81 US26D**

**\$10.00**

**BB81 US26D**

**\$12.00 (NRP)**

**SP81 US26D**

**\$15.00 (SPRING HINGE)**

MARKAR



**MARKAR REINFORCING PIVOT HINGE**

*Markar's reinforcing pivot hinge is a surface*

*mounted reinforcing hinge available for on site installation. Here's the answer to that ever-present problem of hinges with excessive wear and tear.*

*The Markar reinforcing pivot hinge can be installed without special preparation by normal maintenance personnel and is a simple solution to the problem of loose screws, distorted hinges leaves, pulled open knuckles and splits or wood doors.*

**B1923 Full Surface for 4-1/2"**

**wide hinges**

**\$50.00**

HINGE DOCTOR



**HINGE DOCTOR**

*A great way to repair those sagging metal*

*doors. All you do to fix it is to slip the tool over the door hinge and open the door. This action causes the door hinge to bind. While the tool is in place, open the door only an inch or two past the point of where it binds against the tool. Then remove the tool from the hinge and check the door.*

**HA1 For 4-1/2" x 4-1/2" Hinges**

**\$66.95**

**HA3 For Ball Bearing Hinges**

**\$71.95**

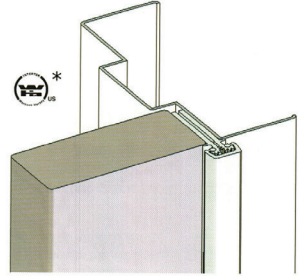
CONTINUOUS HINGES

**HAGER 780 SERIES CONCEALED LEAF  
780-112 / 780-112HD  
STANDARD DUTY, HEAVY DUTY OR LEAD-LINED**

HAGER

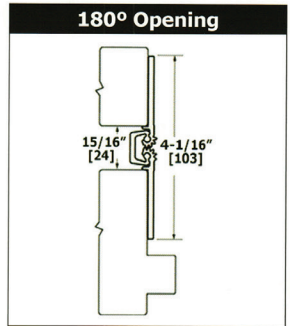
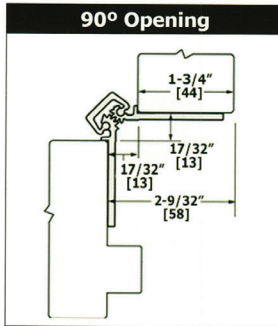
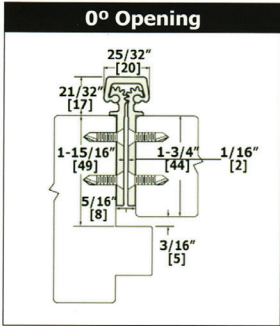
**SPECIFICATIONS**

- Material: Aluminum 6063-T6
- Clearance: 5/16" (8 mm) hinge side plus standard lockside clearance
- Fasteners: Dril-Kwik® screws
- LL Fasteners: 1/2 Dril-Kwik® screws, 1/2 wood screws
- Length Options: Standard and custom lengths available
- Door/Frame Reinforcement: None required to 200 lbs., heavier weight use 16-gauge channel
- Optional Fire Rating: Up to 3-hour metal and 90 minute wood composite (with studs)
- Notes: See additional fire rating details on page 3



**FEATURES**

- Standard duty for medium frequency doors. Heavy duty for high frequency doors or heavy, medium frequency doors.
- Lead lined model for hospital x-ray room doors with double row of screws to straddle lead (Specify "LL")
- Frame and door leaf alignment ribs for proper hinge and door location



- 780-112 83" CLEAR \$75.95**
- 780-112 83" DARK BRONZE \$95.95**
- 780-112HD 83" CLEAR \$103.95**
- 780-112HD 83" DARK BRONZE \$123.95**

Length		Fastener Count					
Inches	Millimeters	# For Door			# For Jamb		
		SD	HD	LL	SD	HD	LL
79	2007	15	15	32	15	15	32
83	2108	19	19	36	19	19	36
85	2159	19	19	36	19	19	36
95	2413	20	20	42	20	20	42
119	3023	23	23	48	23	23	96

# CONTINUOUS HINGES

HAGER

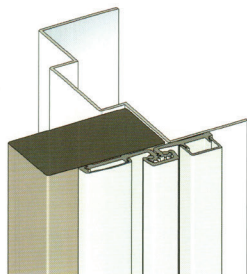
## HAGER 780 SERIES FULL SURFACE 780-157 / 780-157HD STANDARD DUTY OR HEAVY DUTY

### SPECIFICATIONS

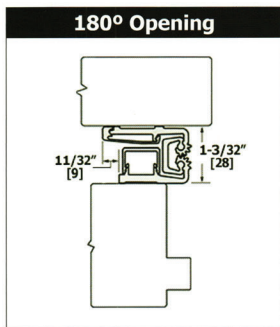
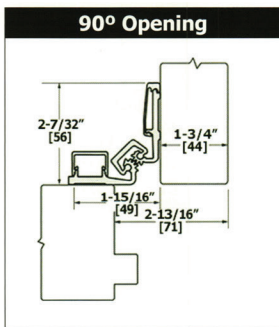
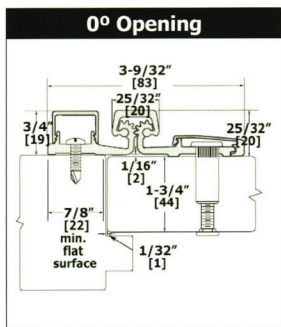
- Material:** Aluminum 6063-T6
- Clearance:** 1/32" (1 mm) minimum recommended for hinge side plus standard lockside clearance
- Fasteners:** Dril-Kwik® screws and sex bolts
- Length Options:** Standard and custom lengths available
- Door Reinforcement:** None required
- Frame Reinforcement:** None required to 200 lbs., heavier weight use 16-gauge channel
- Optional Fire Rating:** Up to 3-hour metal and 90 minute wood composite (with studs)
- Notes:** See additional fire rating details on page 3

### FEATURES

- Standard duty for medium frequency doors. Heavy duty for high frequency doors or heavy, medium frequency doors.
- For surface applications where frame face dimension is limited
- Security moldings
- 1/16" (1.5 mm) inset



(Left hand shown)



**780-157HD 83" CLEAR**

**\$147.50**

**780-157HD 83" DARK BRONZE**

**\$177.50**

Length	Fastener Count				
		# Sex Bolts	# Pan Head		
Inches	Millimeters	SD	HD	SD	HD
79	2007	8	8	34	34
83	2108	8	8	38	38
85	2159	8	8	38	38
95	2413	9	9	41	41
119	3023	10	10	52	52

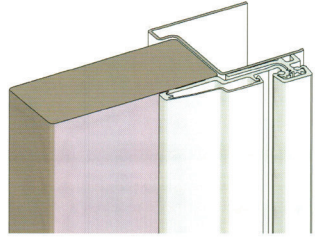
## CONTINUOUS HINGES

### HAGER 780 SERIES FULL SURFACE 780-210 / 780-210HD STANDARD DUTY OR HEAVY DUTY

HAGER

#### SPECIFICATIONS

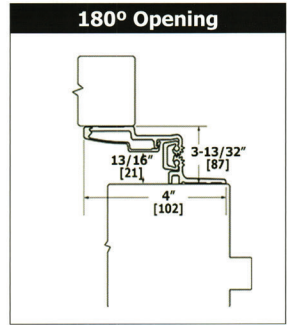
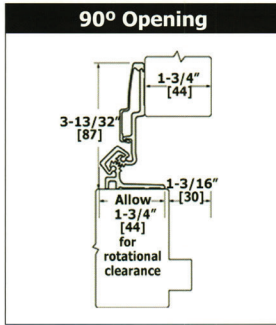
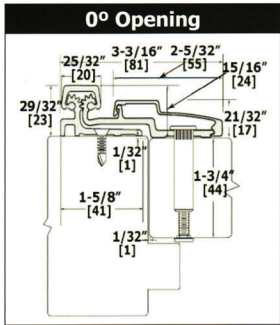
- Material:** Aluminum 6063-T6
- Clearance:** 1/32" (1 mm) minimum recommended for hinge side plus standard lockside clearance. 1-5/8" (41 mm) minimum frame face required plus 3/16" (5 mm) rotational clearance
- Fasteners:** Drill-Kwik® screws and sex bolts
- Length Options:** Standard and custom lengths available
- Door Reinforcement:** None required
- Frame Reinforcement:** None required to 200 lbs., heavier weight use 16-gauge channel
- Optional Fire Rating:** Up to 3-hour metal and 90 minute wood composite (with studs)
- Notes:** See additional fire rating details on page 3



(Left hand shown)

#### FEATURES

- Standard duty for medium frequency doors. Heavy duty for high frequency doors or heavy, medium frequency doors.
- Can be used with any door and frame material
- Security molding
- 1/32" (1 mm) inset



- 780-210 83" CLEAR** **\$117.95**
- 780-210 83" DARK BRONZE** **\$157.95**
- 780-210HD 83" CLEAR** **\$143.95**
- 780-210HD 83" DARK BRONZE** **\$173.95**

Length		Fastener Count					
Inches	Millimeters	# Sex Bolts		# Pan Head		# For Jamb	
		SD	HD	SD	HD	SD	HD
79	2007	8	8	17	17	17	17
83	2108	10	10	17	17	19	19
85	2159	10	10	17	17	19	19
95	2413	11	11	18	18	21	21
119	3023	12	12	24	24	26	26

## OFFSET PIVOTS

GLOBAL

*Offset pivots are used for 1/8" recessed door applications. We stock replacement pivots for most major door manufactures. Suitable for 83" aluminum doors weighting up to 125 pounds. Pivots are engineered and designed for durability, style, and are easy to install.*



Handed

**TH1110**  
ARCH/VISTAWALL STYLE

**\$15.75 / SET**



Handed

**TH1112**  
ARMALITE STYLE

**\$15.75 / SET**



Handed

**TH1114KM**  
US ALUMINUM STYLE

**\$16.95 / SET**

### FEATURES

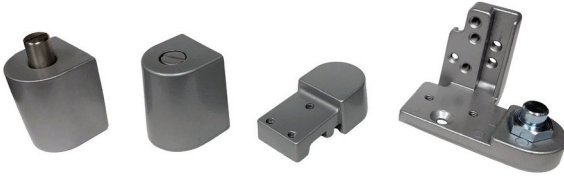
- 3/4" offset pivot for aluminum door and frames
- For 1/8" recessed door applications
- Weather resistant
- Aluminum case construction
- 1/8" vertical adjustment
- Full race ball bearing design provides smooth operation on pivot door portion
- No sag, door resets on floor mounted pivot portion
- Completely tamper proof, yet easily removable, replaceable in unlocked position
- Finishes: AL, DU
- Please refer to intermediate pivots for door over 83" in height



## OFFSET PIVOTS

### TH1118

#### KAWNEER STYLE TOP AND BOTTOM PIVOT SET



Handed

**\$29.95 / SET**

### FEATURES

- For 1/8" recessed door
- A380 precision Diecast Aluminum
- Oilite Bronze bushing in top frame portion
- Full race ball bearing bottom door portions
- Door height adjustable by bottom door portion
- Door weight: up to 125 pounds
- 1/8" Vertical adjustment
- Case hardened stud in floor/jamb portion
- Includes steel reinforcement plates for the door portions
- Top and bottom pivots sold as a set
- Finishes: AL, DU

## LOCKS

### **BEST 9K SERIES** HEAVY DUTY LOCKS - LEVERS

BEST



9K37AB15DS3 626 (ENTRY) LESS CORE	<b>\$385.00</b>
9K37D15DS3 626 (STOREROOM) LESS CORE	<b>\$385.00</b>
9K37IN15DS3 626 (INTRUDER) LESS CORES	<b>\$450.00</b>
9K37R15DS3 626 (CLASSROOM) LESS CORE	<b>\$385.00</b>
9K30L15DS3 626 (PRIVACY)	<b>\$325.00</b>
9K30N15DS3 626 (PASSAGE)	<b>\$285.00</b>

## LOCKS

### FALCON B SERIES

FALCON

#### FEATURES

- Heavy wrought brass or bronze roses over steel through-bolted rose inserts
- UL Listed 3 hour
- Cylinder housings and plugs machined from solid brass
- Brass or cold-formed steel construction with zinc dichromate plating for rust resistance
- All lever designs meet ADA requirements



B101S DANE 626 (PASSAGE)	\$85.50
B301S DANE 626 (PRIVACY)	\$99.00
B511PD DANE 626 (ENTRY)	\$119.25
B561PD DANE 626 (CLASSROOM)	\$119.25
B581PD DANE 626 (STOREROOM)	\$119.25

## LOCKS

SARGENT

### SARGENT 10 LINE

#### FEATURES

- Installs in less than one minute
- Exceeds Grade 1 Standards
- Thousands of functions, finish and design combinations for virtually any application
- Multiple through bolt positions adapt to any door prep
- Manufactured with pride in New Haven, CT
- Seven year warranty



10G04LL US26D (STOREROOM)	\$385.00
10G05LL US26D (OFFICE)	\$385.00
10G37LL US26D CLASSROOM)	\$385.00
10U15LL US26D (PASSAGE)	\$285.00
10U65LL US26D (PRIVACY)	\$320.00

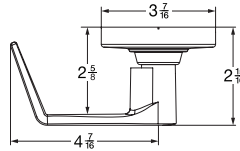
LOCKS

SCHLAGE

**SCHLAGE ALX SERIES**  
**DEPENDABLE PERFORMANCE FOR HIGH TRAFFIC**  
**COMMERCIAL APPLICATIONS**

The Schlage ALX Series is a grade 2 lock unlike any other. Designed to exceed expectations, it features a single, patent pending chassis design that supports most functions and all cylinder applications. As a modular lock, ALX Series enables in-field function set up or exchange and a field-selectable Vandlgard feature on all locking functions. Exceptional durability comes from a stainless steel latch bolt and deep-drawn spindles with 5 points of lever engagement and grade 1 compression springs that prevent droop and wobble. Perfectly suited to the ND grade 1 series, ALX also allows you to seamlessly suite between the two to gain grade 1 strength, security and functionality when and where you need it.

Saturn (SAT)<sup>1</sup>



ALX10 SAT 613 (PASSAGE)	<b>\$105.00</b>
ALX10 SAT 626 (PASSAGE)	<b>\$98.50</b>
ALX40 SAT 613 (PRIVACY)	<b>\$120.00</b>
ALX40 SAT 626 (PRIVACY)	<b>\$113.00</b>
ALX53P SAT C123 613 (ENTRY)	<b>\$150.50</b>
ALX53P SAT C123 626 (ENTRY)	<b>\$138.65</b>
ALX70P SAT C123 613 (CLASSROOM)	<b>\$150.50</b>
ALX70P SAT C123 626 (CLASSROOM)	<b>\$138.65</b>
ALX80P SAT C123 613 (STOREROOM)	<b>\$150.50</b>
ALX80P SAT C123 626 (STOREROOM)	<b>\$138.65</b>

LOCKS

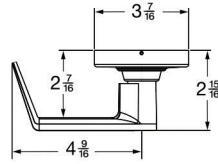
SCHLAGE

**SCHLAGE ND SERIES**

**CONTINUOUS IMPROVEMENTS MAKES THE ND SERIES A SIMPLER, SMARTER, STRONGER LOCK**

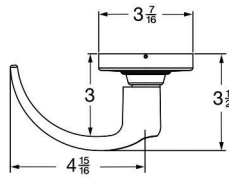
*The SCHLAGE ND Series is the toughest cylindrical lock we make. That means you get premium durability and performance in a lock that's also easy to service and maintain. And because we test our locks beyond the standards required by ANSI, you know that you're getting a product you can count on to withstand the use and abuse that come with heavy duty commercial applications.*

Rhodes (RHO)<sup>1,2</sup>



Mechanical

Sparta (SPA)<sup>1,2</sup>



Mechanical

ND10S RHO or SPA 626 (PASSAGE)	<b>\$270.90</b>
ND40S RHO or SPA 626 (PRIVACY)	<b>\$311.85</b>
ND50PD RHO or SPA C123 626 (ENTRY/OFFICE)	<b>\$369.00</b>
ND53PD RHO or SPA C123 626 (ENTRY)	<b>\$369.00</b>
ND70PD RHO or SPA C123 626 (CLASSROOM)	<b>\$369.00</b>
ND80PD RHO or SPA C123 626 (STOREROOM)	<b>\$369.00</b>

# LOCKS

SCHLAGE

## SCHLAGE B500 SERIES

The B500 Series deadbolt is a revolutionary new deadbolt that delivers higher security, tougher performance and the ultimate installation versatility. Designed by locksmiths for locksmiths, the B500 Series deadbolt can be fitted with any SCHLAGE cylinder, fits virtually every door you service, enhances lock strength on the jamb side of the door will change forever the way you look at deadbolts.

### DEADBOLT DESIGNS

A versatile and economical Grade 2 deadbolt for medium duty commercial and heavy duty residential applications. Furnished with conventional cylinder standard. Available with Primus XP high security cylinder, Primus XP UL437 Listed high security cylinder, full size interchangeable core cylinder, Primus XP interchangeable core cylinder, or small format interchangeable core (SFIC) cylinder. Fits 2-1/8" (54 mm) prep standard and anti-pry shield can be removable to fit 1-1/2" (38 mm) prep.

### DEADBOLT FUNCTIONS



Schlage B560/B560F  
ANSI E0152  
Single cylinder deadbolt

- Deadbolt thrown or retracted by key outside or thumbturn inside



Schlage B571  
ANSI -  
Door bolt occupancy indicator

- Deadbolt thrown or retracted by thumbturn inside
- Outside indicator displays "In use" or "Vacant"
- Requires 1 1/2" cross bore prep
- Not UL rated
- 61-509 Emergency key included



Schlage B562  
ANSI E0142  
Double cylinder deadbolt

- Deadbolt thrown or retracted by key either side
- Not UL rated

Caution: Double cylinder locks on residences and any door, in any structure, which is used for egress are a life safety hazard in terms of emergency and their use is not recommended. Installation should be in accordance with existing codes only.



Key



Thumbturn



Emergency key



B560P C123 613 (SINGLE CYLINDER)	<b>\$60.50</b>
B560P C123 626 (SINGLE CYLINDER)	<b>\$52.50</b>
B562P C123 626 (DOUBLE CYLINDER)	<b>\$71.50</b>
B571 626 (OCCUPANCY INDICATOR)	<b>\$42.50</b>

# LOCKS

SIMPLEX

## SIMPLEX



- Mechanical Pushbutton Lock
- Single Access Code
- Cylindrical, Exit Trim, and Mortise
- Lever/Knob
- ANSI/BHMA Grade 1 Certified

**5021 XS WL 626**

**\$435.00**

**5010 XS WL 626 (EXIT TRIM)**

**\$487.95**



- Mechanical Pushbutton Lock
- Single Access Code
- Cylindrical
- Knob

**1011 26D**

**\$375.00**

**1021 (LESS CORE) 26D**

**\$406.95**



- Mechanical Pushbutton Lock
- Single Access Code
- Cylindrical
- Lever (Requires Handing)

**L1011 26D**

**\$449.95**

**L1021 (LESS CORE) 26D**

**\$479.95**



LOCKS

STANLEY

**DORMA COMMERCIAL HARDWARE**



- Tested to meet Grade 1 specification of 800,000 cycles.
- Standard clutching mechanism provides resistance to damage caused by physical force.
- Thru-bolt design and heavy-duty spring tension provides longer performance life and prevents lever sag.
- Concealed mounting screws.
- Compartmentalized packaging allows for quick and easy installation.

QCL130 E 626 (PASSAGE)	<b>\$124.20</b>
QCL140 E 626 (PRIVACY)	<b>\$150.30</b>
QCL150 E 626 (ENTRY)	<b>\$171.90</b>
QCL160 E 626 (CLASSROOM)	<b>\$171.90</b>
QCL170 E 626 (STOREROOM)	<b>\$171.90</b>



- Tested to meet Grade 2 specification of 400,000 cycles.
- Standard clutching mechanism provides resistance to damage caused by physical force.
- Thru-bolt design and heavy-duty spring tension provides longer performance life and prevents lever sag.
- Concealed mounting screws.
- Compartmentalized packaging allows for quick and easy installation.

QCL230 E or M 626 (PASSAGE)	<b>\$70.20</b>
QCL240 E or M 626 (PRIVACY)	<b>\$74.25</b>
QCL250 E or M 626 (ENTRY)	<b>\$87.30</b>
QCL260 E or M 626 (CLASSROOM)	<b>\$87.30</b>
QCL270 E or M 626 (STOREROOM)	<b>\$87.30</b>



- Tested to meet Grade 1 specification of 250,000 cycles.
- Solid forge housing provides enhanced strength and durability.
- Full 1" (25.4 mm) throwbolt with saw-resistant hardened steel roller pin.
- Anti-drill design - two (2) ball bearing insert to prevent drill attacks.
- ADA thumbturn.
- Compartmentalized packaging allows for quick and easy installation.

QDB280 626 (SINGLE CYLINDER)	<b>\$38.70</b>
------------------------------	----------------

KEYED CYLINDERS SUPPLIED IN SCHLAGE "C" KEYWAY

LOCKS

ADAMS RITE

ADAMS RITE



**HEAVY DUTY DEADLATCH**  
**1-1/8" NON-HANDED**  
 4900 Clear **\$70.00**



**STD. DUTY DEADLATCH**  
**1-1/8" NON-HANDED**  
 4510 628 **\$51.00**



**MS1850S 1-1/8"**  
 628 **\$45.00**



**DEADLOCK LEVER**  
 4550 628 **\$118.80**



**DEADLATCH HANDLES**  
 4568 628 **\$42.95**



**PUSH / PULL PADDLE**  
 4590  
 313 or 628 **\$62.95**

SX

**SX**  
 ALUMINUM STOREFRONT



*Clear or Dark Bronze finishes 31/32" & 1-1/8" backsets flat or radius faceplates*  
**SX 185 DEADLATCH** **\$15.00**



*Clear or Dark Bronze finishes 31/32" & 1-1/8" backsets flat or radius faceplates*  
**SX 189 HOOK LATCH/LOCK** **\$15.00**



*Clear or Dark Bronze handed*  
**SX 416 HANDLE** **\$17.00**



*Clear or Dark Bronze reversible hand*  
**SX 459 PUSH/PULL PADDLE** **\$33.00**



*Clear or Dark Bronze finishes 31/32" & 1-1/8" backsets flat or radius faceplates*  
**SX 471 DEADLATCH** **\$16.00**

## CYLINDERS & HOUSINGS

### BEST 1E SERIES

#### FEATURES



#### 1E MORTISE CYLINDER

Standard mortise applications requires use of BEST's 1E series cylinder with standard 1E-C4 cam. BEST cylinders may be altered to function with other manufactures' locks by use of different cams and different cylinders rings. Special cylinder variations are available for most applications. BEST cylinders are machined from brass or bronze bar stock and are available in a variety of finishes. Additional security is provided by a set screw that mounts diagonally in the cylinder wall and when tightened, holds the cylinder securely in the housing. BEST mortise cylinders feature the BEST interchangeable core and may be master-keyed into any existing BEST system. Contact your local Stanley Security Solutions sales office for information on special cylinder applications not listed in this catalog.

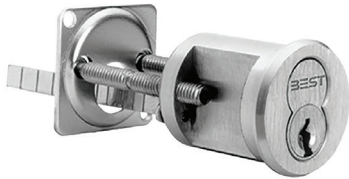
#### MORTISE HOUSING LESS CORE

**1E74 613 (C4 or C181 CAM)**

**\$53.00**

**1E74 626 (C4 or C181 CAM)**

**\$53.00**



#### 12E RIM CYLINDER

Standard rim cylinder applications require the use of BEST's 1E rim cylinder series. BEST rim cylinder are interchangeable with other manufactures' rim cylinders. BEST rim cylinders are machined from solid bar stock and available in a variety of finishes. The standard package for the BEST rim cylinder include cylinder, RP3 ring package, 1E-S2 spindle, clamp plate and clamp plate screws. BEST rim cylinders feature the BEST interchangeable core and may be master keyed into existing Best system.

#### RIM HOUSING LESS CORE

**12E72 613**

**\$47.00**

**12E72 626**

**\$47.00**

VARIOUS CORES AND KEY BLANKS AVAILABLE

CYLINDERS & HOUSINGS

ILCO

ILCO



**7161 THUMBTURN CYLINDER**

**1" DIA \$13.00 each**



**7010 DUMMY RIM CYLINDER**

**1" DIA \$15.00 each**



**7160DC DUMMY 1" MORTISE CYLINDER**

**1" DIA \$9.00 each**



**MORTISE CYLINDER**

*These solid brass mortise cylinders are pinned with 5 pin tumblers. 1-1/8" and up are drilled for 6 pin. Each cylinder comes with 2 keys and most are available in 26D, Dura or US3.*



**UNIVERSAL CYLINDER**

*Fits most knobs, lever and deadbolt locks.*

**15995 \$16.00 each**



**BRASS RIM CYLINDER**

*These solid brass rim cylinders come with two break-off screws, cylinder ring, segmented spindle and two look-alike keys.*

**7075 } \$14.00 each**  
**(KEYED ALIKE) } \$28.00 pair**

**7165 - 1" } \$14.00 each**  
**7185 - 1-1/8" } \$28.00 pair (KEYED ALIKE)**  
**7205 - 1-1/4" }**

ILCO AND KEYBLANKS AVAILABLE  
 SPECIAL KEYBLANKS (RH, UNDD) AVAILABLE

CYLINDERS & HOUSINGS

**KSP**

INTERCHANGEABLE CORE PRODUCTS  
INTERCHANGEABLE WITH: BEST • ARROW • FALCON

KSP



- MORTISE AND RIM HOUSINGS STAKE-ON (FIXED) CAM
- |  |                |
|--|----------------|
| 307 LESS CORE 6/7 PIN MORTISE HOUSING 613        | <b>\$19.00</b> |
| 307 LESS CORE 6/7 PIN MORTISE HOUSING 626        | <b>\$19.00</b> |
| 308 LESS CORE 6/7 PIN RIM HOUSING 613            | <b>\$19.00</b> |
| 308 LESS CORE 6/7 PIN RIM HOUSING 626            | <b>\$19.00</b> |
| 207 COMBINATED CORE (2 KEYS + 1 CONTROL KEY) 626 | <b>\$23.00</b> |

EXIT DEVICES

ADAMS RITE

**ADAMS RITE**



**8400 NARROW STILE MORTISE EXIT DEVICE**

**AR 8400**

*Heavy duty deadlatching mechanism. Pushbar clad or anodized not plated. Easy to install. Minimum 2" stile. Fits narrow, medium and wide stile aluminum doors.*

**AR 8410 628 FINISH RHR or LHR 36" / 1-1/8" BACKSET**

**\$425.00**

**AR 8420 313 FINISH RHR or LHR 36" / 1-1/8" BACKSET**

**\$425.00**



**8800 NARROW STILE**

**EXIT DEVICE**

**AR 8800**

*Patented "starwheel" bolt interlocks door to frame. Strong, durable construction for a high level of security. Minimum 2" stile. Fits narrow, medium and wide stile aluminum doors.*

**AR 8801 628 FINISH 36"**

**\$316.95**

**AR 8802 313 FINISH 36"**

**\$316.95**

EXIT DEVICES

DETEX

DETEX



**EXIT CONTROL LOCK**

*Code complaint, battery alarmed, rugged panic hardware with deadbolt provides managed security for secondary exits.*

ECL - 230D

**\$255.00**



**EXIT ALARM**

*This low cost, self-contained door alarm employs a 95-decibel directional piezo horn to warn of unauthorized use of a door. Authorized persons with by-pass key can temporarily disarm the unit allowing them to open and close the door within a preset time and not sound alarm.*

EAX500

**\$182.00**



**ALARMED EXIT DEVICE  
VALUE SERIES ALARMED  
RIM EXIT DEVICE**

*Code-compliant, alarmed, durable, attractive and easy to install fire and panic hardware with relatching bolt provides enhanced security for primary and secondary exits. 3' Length*

V40 EB 36" 628

**\$395.00**

## EXIT DEVICES

FALCON

### FALCON



#### **1690 CONCEALED VERTICAL ROD TOUCHBAR DEVICE**

*The design of the 1690 is ideal demanding, moderate-traffic applications. The vertical rods and latch mechanisms are concealed in the vertical door stile, ensuring trouble-free operation. Cast metal cover plates and end caps hold up to rigorous use. A quick, single-point dogging feature in the housing deactivate the device, permitting unrestricted traffic flow. The 1690 may also be used to retrofit a 1990 Series crossbar device.*

**1692NL - OP 36" - US28**

**\$334.75**

**1692NL - OP 36" - DC13**

**\$352.80**



#### **1790 RIM TOUCHBAR DEVICE**

*The 1790 rim device is typically used in applications where maintenance is a concern because the rim device has fewer parts and pieces than current exit devices. The results is less maintenance and adjustment. The streamlined design has no openings for chains, reducing the risk for code infringements and offering increased building security by eliminating the possibility of tampering and forced entry through the use of coat hangers and other tools. The 1790 may also be used to retrofit a 2090 series crossbar device.*

**1792NL - OP US28**

**\$310.95**

**1792NL - OP DC13**

**\$327.60**



EXIT DEVICES

DORMA COMMERCIAL

RIM TYPE

STANLEY



- Tested and certified to significantly exceed 1,000,000 cycles - well above the requirements for Grade 1 certification.
- Thru-bolt trim design for increased security and durability.
- Wide variety of trim options to fit any job.
- Consistent styling allows for harmonization with other STANLEY Commercial Hardware products.

QED111 36" 626	<b>\$403.75</b>
QED111 48" 626	<b>\$424.20</b>
QED112 36" 626 (W/CYLINDER DOGGING)	<b>\$428.45</b>
QED113 36" 626 (FIRE RATED)	<b>\$431.80</b>
QED113 48" 626 (FIRE RATED)	<b>\$452.20</b>



- Tested and certified to significantly exceed 500,000 cycles required for Grade 1 certification.
- Field sizeable 36" to 32" door application (91.44 cm - 81.28 cm).
- Consistent styling allows for harmonization with other STANLEY Commercial Hardware products.

QED311 36" 689 or 690	<b>\$140.00</b>
QED311 48" 689	<b>\$149.00</b>
QED313 36" 689 or 690 (FIRE RATED)	<b>\$183.00</b>
QED313 48" 689 or 690 (FIRE RATED)	<b>\$192.00</b>

\*CALL FOR AVAILABLE TRIM

EXIT DEVICES

VON DUPRIN

VON DUPRIN

RIM EXIT DEVICE



The 209 Strike ships standard, optional strikes available

Hex key dogging comes standard on 22 Rim exit device



**22 RIM EXIT DEVICE**

For all types of single and double doors with mullion. UL listed for Panic Exit Hardware. Devices are ANSI A156.3, 2008 Grade 1. Covers stock hollow metal doors with 161 cutouts. Fits door stiles as narrow as 3-13/16" (97 mm). The device is non-handed.

- 22EO 3' SP28 or SP313 **\$257.95**
- 22EO 4' SP28 **\$264.00**

**TRIM OPTIONS**

- 230L SP28 (CLASSROOM LEVER) LESS CYLINDER **\$140.00**
- 230NL SP28 (NIGHT LATCH PULL) LESS CYLINDER **\$80.00**
- 230DT SP28 (DUMMY PULL) **\$72.00**



1439 Roller ships standard, optional strikes available

**33A AND 35A RIM EXIT DEVICE**

For all types of single and double doors with mullion. UL listed for Panic Exit Hardware. Devices are ANSI A156.3 - 2001 Grade 1. The 35A has a smooth mechanism case and the 33A has grooved case. The rim device is non-handed except when the SS (single switch) option is used. 33A/35A fits door stiles as narrow as 1-3/4" (44 mm). Newly designed device has a one piece center case cover.



209 Strike needs to be specified for Hollow Metal Frames

- 33A-EO 3' US28 **\$842.00**
- 33A-EO 3' US26D **\$999.50**
- 33A-EO 3' 313 **\$852.00**

**TRIM OPTIONS**

- 388 US26D **\$178.95**

\*CALL FOR AVAILABLE TRIM & OTHER OPTIONS

## EXIT DEVICES

### VON DUPRIN

#### RIM EXIT DEVICE



The 299 Strike ships standard, optional strikes available

Hex key dogging comes standard on 98/99 Rim exit devices



#### 98/99 RIM EXIT DEVICE

For all types of single and double doors with mullion. UL listed for Panic Exit Hardware. Devices are ANSI A156.3 - 2008 Grade 1. The 98 device has a smooth mechanism case and the 99 device has a grooved case. The rim device is non-handed expect when the following device options are used: SD (special dogging), -2 (double cylinder) or SS (signal switch). Covers stock hollow metal doors with 86 or 161 cutouts on single doors (may cover cutouts on pairs - consult template).

99EO 3' US28	<b>\$752.00</b>
99EO 3' US26D	<b>\$850.85</b>
99EO 3' 313	<b>\$789.35</b>
99EO 4' 28	<b>\$762.75</b>
99EO 4' 26D	<b>\$861.45</b>
99EO 4' 313	<b>\$800.00</b>

#### TRIM OPTIONS

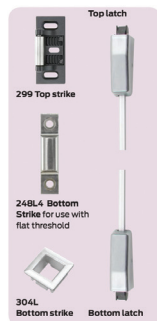
990NL 26D (NIGHT LATCH) LESS CYLINDER	<b>\$179.40</b>
990DT 26D (DUMMY PULL)	<b>\$169.65</b>
996L 26D (CLASSROOM LEVER) LESS CYLINDER	<b>\$388.05</b>
996L-NL 26D (NIGHT LATCH) LESS CYLINDER	<b>\$309.10</b>
996L-DT 26D (DUMMY PULL)	<b>\$309.10</b>
996L-BE 26D (PASSAGE LEVER)	<b>\$388.05</b>

EXIT DEVICES

VON DUPRIN

VON DUPRIN

**SURFACE MOUNTED VERTICAL ROD DEVICE**

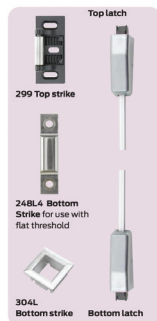


**2227 SURFACE MOUNTED VERTICAL ROD EXIT DEVICE**

For all types of single and double doors. UL listed for Panic Exit Hardware. Devices are ANSI A156.3 - 2008 Grade 1. Covers stock hollow metal doors with 86 or 161 cutouts. Fits door stiles as narrow as 3-5/8" (92 mm). The device is non-handed.

**2227EO 3' x 7' SP28**

Hex key dogging comes standard on 9827/9927  
**\$448.25**



**9827/9927 SURFACE MOUNTED VERTICAL ROD DEVICES**

For all types of single and double doors. UL listed for Panic Exit Hardware. Devices are ANSI A156.3 - 2008 Grade 1. Covers stock hollow metal doors with 86 or 161 cutouts. The 9827 device has a smooth mechanism case and the 9927 devices has a grooved case. The surface vertical rod device is a non-handed except when the following device options are used: SD (special dogging), SS (signal switch), or WS (Tornado/Hurricane). Vertical rod and latch guards are available to protect the bottom rod of the exit device from damage by impacts of carts or gurneys passing through doors.

**9927EO US28**

**9927EO US26D**

**9927EO 313**

Hex key dogging comes standard on 9827/9927

**\$1,122.80**

**\$1,230.40**

**\$1,198.50**

\*CALL FOR AVAILABLE TRIM & OTHER OPTIONS

EXIT DEVICES

VON DUPRIN  
CONCEALED VERTICAL ROD DEVICE

VON DUPRIN



**3347A/3547A CONCEALED VERTICAL ROD DEVICE**

For all types of single and double doors. UL listed for Panic Exit Hardware. Devices are ANSI A156.3 - 2001 Grade 1. The 3547A has a smooth mechanism case and the 3347A has grooved case. The concealed vertical rod device is non-handed except when the SS (single switch) option is used.

3347A/3547A fits door stiles as narrow as 2-1/8" (44 mm), wood door stiles as narrow as 4" (102 mm). Newly designed device has a one piece center case cover.

**3347A-EO 3' US28**

**\$1,251.10**

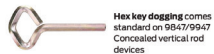
**3347A-EO 3' 313**

**\$1,278.30**



**9847/9947 CONCEALED VERTICAL ROD DEVICE**

For all types of single and double metal doors. UL listed for Panic Exit Hardware. Devices are ANSI A156.3 - 2008 Grade 1. The 9847 device has a smooth mechanism case and the 9947 device has a grooved case. The concealed vertical rod device is non-handed except when the following device options are used: SD (special dogging), or SS (signal switch).



Hex key dogging comes standard on 9847/9947 Concealed vertical rod devices.

**9947EO 3' US28**

**\$1,150.00**

**9947EO 3' US26D**

**\$1,294.85**

**9947EO 3' 313**

**\$1,242.85**

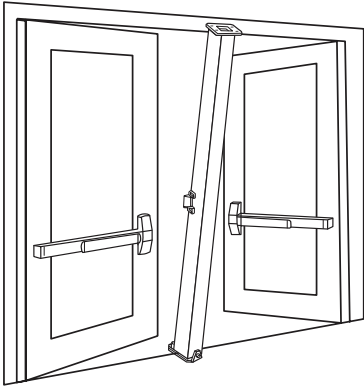
# MULLIONS

VON DUPRIN

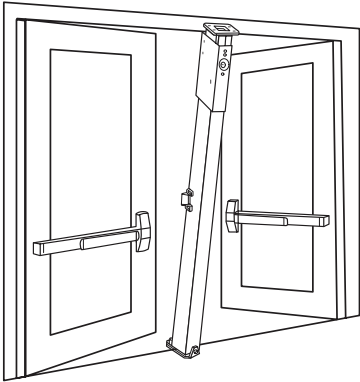
## VON DUPRIN

### REMOVABLE STEEL MULLIONS

Removable mullions



Keyed removable steel mullions



**Removable steel mullions** Mullions provide single door performance in double door openings with rim devices. Mullions are easily removed by loosening bottom set screw and removing top fitting cover. The top mullion fitting is attached to the frame and is concealed by the fitting cover.

Steel mullions are 2" (51mm) wide and 3" (76mm) deep, with a wall thickness of 1/8" (3mm).

Mullions are shipped with mounting screws and prepared for strikes. Strikes are not included except where indicated.

Steel mullions are available in SP28 and SP313 finishes. Consult factory for other powder coat finish options.

**KR – Keyed removable steel mullions** makes removal faster and easier by a single operation of the mortise cylinder. Once mullion is removed, large equipment or furniture can freely pass through the opening. The unit will self lock when re-installed, without use of the cylinder key. Uses a 1 1/2" mortise cylinder with a straight cam (Schlage cam reference B502-191). Cylinders are sold separately. Prefix mullion model with "KR".

**Removeable aluminum mullions** are 1 1/8" (27mm) wide on face closest to the door and 2 1/8" (60mm) at the widest point. The depth is 3 1/8" (79mm) with a wall thickness of 1/8" (3mm).

Aluminum mullions are available in US4, US10, US28, 313 and 315 finishes. Consult factory for other powder coat finish options.

Stock Hollow Metal Applications for devices mounted to cover ANSI 161 cutouts are higher than the standard mullion strike location. Consult the factory for special strike preparation or order a blank mullion. See below.

Blank Mullions are furnished without strike preparation. They are used to mount devices at a strike height different from the standard mullion preparation.

**To order, specify:**

1. For keyed Removable option on steel mullions, prefix model number with "KR"
2. Model number.
3. Height of opening
4. Finish
5. Handing if required.
6. Centerline deviation (refer to device template for standard centerline).
7. Strikes, when required, should be ordered with device.
8. For keyed Removable option on steel mullions, prefix model number with "KR"

4954 7' 2" SP28 or SP313

KR4954 7' 6" SP28 or SP313

5654 7' 2" 628 or 313 (ALUMINUM MULLIONS)

**\$375.00**

**\$695.00**

**\$861.55**

## CLOSERS

### FALCON

### SC60A SERIES



FALCON

#### OVERVIEW

When you need a dependable closer for a light or medium-duty commercial application like a small boutique or office, the Falcon SC60A Series fits perfectly. Designed for interior use with aluminum storefronts and mix use complexes, the SC60A Series offers ANSI Grade 1 durability backed by a ten-year warranty. Since the SC60A has the most common hole pattern in the industry, it's a versatile and easy choice for retrofit. The SC60A is another great example of how Falcon provides a solid product at a solid price.

#### PRODUCT SPECIFICATIONS

- Single piece cast aluminum body
- Fully adjustable size 1-5
- Separate adjustable general speed, latch speed and backcheck
- Industry common hole pattern retrofittable to Norton 1600
- Non-handed for left-or-right-swing doors
- Heat treated pinion and steel piston
- Staked valves
- Universal screw pack, now including SRTs screws
- Meets ANSI A117.1
- Certified ANSI/BHMA A156.4, Grade1
- Cover is UL approved for use in fire rated assemblies
- UL listed and compliant to UL10C and UBC 7-2 (1997)
- 10-year warranty

SC61A RW/PA 622 (MATTE BLACK), 689 (ALUM) or 695 (DARK BRONZE)

**6 CLOSERS PER CASE (CASE QUANTITIES ONLY)**

**CASE TOTAL**

\$64.00 EACH PER 6 (FREIGHT NOT INCLUDED)

**\$384.00**

\$59.50 EACH PER 12 OR MORE (FREIGHT NOT INCLUDED)

**\$71400**

\$55.00 EACH PER 18 OR MORE (FREIGHT INCLUDED)

**\$990.00**

# CLOSERS

LCN

LCN

## 1250 SERIES



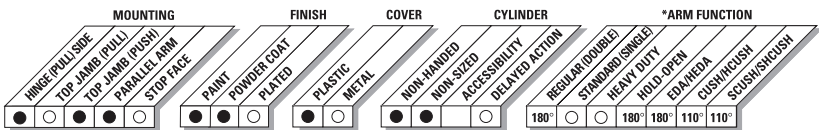
### ALUMINUM BODY 1250 RW/PA AL or DKB

**\$79.00**

The 1250 Series cast aluminum closer is designed for low-frequency and low abusive traffic areas. This cast aluminum closer is ideal for aluminum storefronts, interior offices and many other applications. Combining dependable operation, low maintenance and a patented stylis look - with or without the optional slim line cover. And with the most common hole pattern in the industry, the 1250 Series is the perfect choice for easy aftermarket replacement.

<b>Certifications</b>	Grade 1 - ANSI A156.4, UL 10C, ADA, 100 Hour Salt Spray, Meets BAA - Buy American Act	<b>Cover</b>	<ul style="list-style-type: none"> <li>■ Slim Line Cover, Optional</li> </ul>
<b>Body Construction</b>	<ul style="list-style-type: none"> <li>■ Cast Aluminum Body</li> <li>■ Full Complement Bearing</li> <li>■ 1-3/8" Diameter Piston</li> <li>■ 5/8" Diameter Single Heat Treated Pinion Journal</li> </ul>	<b>Fasteners</b>	Universal Screw Pack (UNIV)
<b>Fluid</b>	All Weather Fluid	<b>Mounting</b>	Hinge (Pull Side), Top Jamb (Push Side), Parallel Arm (Push Side)
<b>Handing</b>	Non-Handed	<b>Arms</b>	Tripack includes Regular, Top Jamb, and Parallel Arm (Rw/PA)
<b>Templating</b>	Peel-n-Stick templates - 3/4" x 9-1/16" Mounting Hole Pattern	<b>Finishes/Colors/ Powder Coat</b>	<ul style="list-style-type: none"> <li>■ Aluminum (689)</li> <li>■ Statuary Bronze (690)</li> <li>■ Light Bronze (691)</li> <li>■ Black (693)</li> <li>■ Dark Bronze (695)</li> <li>■ Brass (696)</li> <li>■ Custom colors optional</li> </ul>
<b>Size</b>	Adjustable Spring Size 1-5		<ul style="list-style-type: none"> <li>■ Optional SRI primer - powder coat only</li> </ul>
<b>Warranty</b>	15 years		

**Special Templates** | Customized installation templates or products may be available to solve unusual applications. Contact LCN Product Support for assistance.



● AVAILABLE  
○ NOT AVAILABLE

♿ Closer available with less than 5.0 lbs. opening force on 36" door.  
\* Maximum opening/hold-open point with standard template.

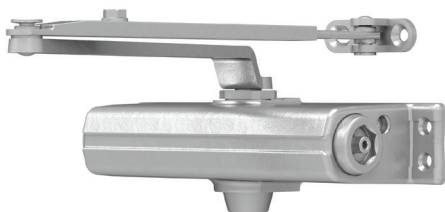


# CLOSERS

LCN

LCN

## 1260 SERIES



1260 RW/PA AL or DKB

\$176.30

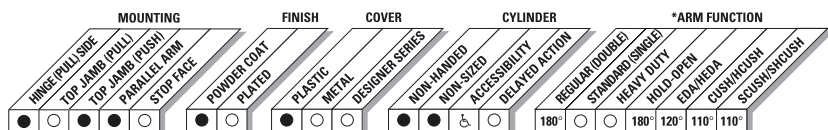
The 1260 is a light to medium duty cast iron closer designed to fit into the most common commercial foot print. The 1260 is adjustable for spring sizes 1-5. The 1260 also features a complete line of regular and extra duty arms, LCN's peel-n-stick installation templates, a convenient spring adjust pointer, and an optional Quick Fix™ bracket kit.

<b>Certifications</b>	Grade 1 - ANSI A156.4, UL 10C, ADA, 100 Hour Salt Spray, Meets BAA - Buy American Act
<b>Body Construction</b>	<ul style="list-style-type: none"> <li>Cast Iron Body</li> <li>Full Complement Bearing</li> <li>1-3/8" Diameter Piston</li> <li>5/8" Diameter Single Heat Treated Pinion Journal</li> </ul>
<b>Fluid</b>	All Weather Fluid
<b>Handing</b>	Non-Handed
<b>Templating</b>	Peel-n-Stick templates - 3/4" x 9-1/16" Mounting Hole Pattern
<b>Size</b>	Adjustable Spring Size 1-5
<b>Warranty</b>	20 years

<b>Cover</b>	<ul style="list-style-type: none"> <li>Slim Line Cover, Optional</li> </ul>
<b>Fasteners</b>	Self Reaming and Tapping Screws (SRT)
<b>Mounting</b>	Hinge (Pull Side), Top Jamb (Push Side), Parallel Arm (Push Side)
<b>Arms</b>	Regular Arm
<b>Finishes/Colors/ Powder Coat</b>	<ul style="list-style-type: none"> <li>Aluminum (689)</li> <li>Statuary Bronze (690)</li> <li>Light Bronze (691)</li> <li>Black (693)</li> <li>Dark Bronze (695)</li> <li>Brass (696)</li> <li>Custom colors optional</li> <li>Optional SRI primer - powder coat only</li> </ul>

### Special Templates

Customized installation templates or products may be available to solve unusual applications. Contact LCN Product Support for assistance.



● AVAILABLE  
○ NOT AVAILABLE

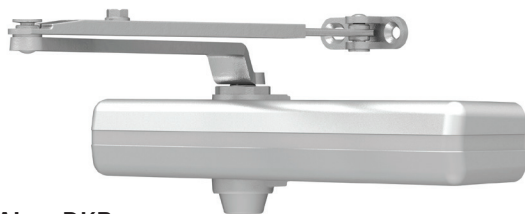
♿ Closer available with less than 5.0 lbs. opening force on 36" door.  
\* Maximum opening/hold-open point with standard template.

# CLOSERS

LCN

LCN

## 1460 SERIES



1460 RW/PA AL or DKB

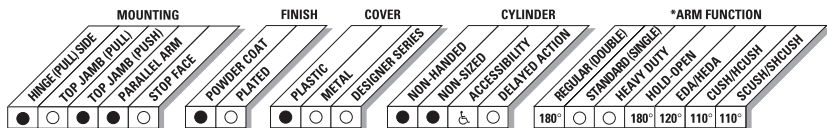
\$189.00

Designed for maximum versatility, the 1460, available with multiple cover options, can be used for both commercial and institutional applications. This fully universal closer offers a wide variety of options and fast and accurate installation.

<b>Certifications</b>	Grade 1 - ANSI A156.4, UL10C, ADA, 100 Hour Salt Spray, Meets BAA - Buy American Act	<b>Cover</b>	<ul style="list-style-type: none"> <li>■ Slim Line Plastic, Standard</li> <li>■ Full Plastic and Metal Designer Series, Optional</li> </ul>
<b>Body Construction</b>	<ul style="list-style-type: none"> <li>■ Cast Iron Body</li> <li>■ Full Complement Bearing</li> <li>■ 1-1/4" Diameter Piston</li> <li>■ 3/4" Diameter Single Heat Treated Pinion Journal</li> </ul>	<b>Fasteners</b>	Self Reaming and Tapping Screws (SRT)
<b>Fluid</b>	All Weather Fluid	<b>Mounting</b>	Hinge (Pull Side), Top Jamb (Push Side), Parallel Arm (Push Side)
<b>Handing</b>	Non-Handed	<b>Arms</b>	Standard regular pull side, and top jamb
<b>Templating</b>	Peel-n-Stick templates - 1" x 7-1/2" Mounting Hole Pattern	<b>Finishes/Colors/ Powder Coat</b>	<ul style="list-style-type: none"> <li>■ Aluminum (689)</li> <li>■ Statuary Bronze (690)</li> <li>■ Light Bronze (691)</li> <li>■ Black (693)</li> <li>■ Dark Bronze (695)</li> <li>■ Brass (696)</li> <li>■ Custom colors optional</li> <li>■ Optional SRI primer - powder coat only</li> <li>■ Optional plated finishes</li> </ul>
<b>Size</b>	Adjustable Spring Size 1-6. Includes Patented Green Dial		
<b>Warranty</b>	30 years		

### Special Templates

Customized installation templates or products may be available to solve unusual applications. Contact LCN Product Support for assistance.



● AVAILABLE  
○ NOT AVAILABLE

♿ Closer available with less than 5.0 lbs. opening force on 36" door.  
\* Maximum opening/hold-open point with standard template.

# CLOSERS

LCN

LCN

## 4010 SERIES



4010 REG AL or DKB

\$344.00

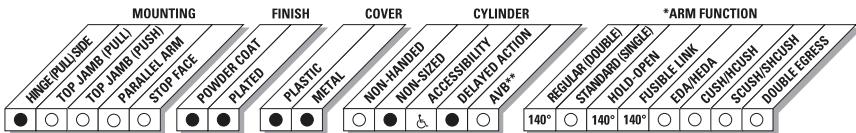
The 4010 is LCN's best performing heavy duty closer designed specifically for institutional and other rugged high traffic applications.

<b>Certifications</b>	Grade 1 - ANSI A156.4, UL 10C, ADA, 100 Hour Salt Spray, Meets BAA - Buy American Act
<b>Body Construction</b>	<ul style="list-style-type: none"> <li>Cast Iron Body</li> <li>Full Complement Bearing</li> <li>1-1/2" Diameter Piston</li> <li>11/16" Diameter Double Heat Treated Pinion Journal</li> </ul>
<b>Fluid</b>	All Weather Fluid
<b>Handing</b>	Handed
<b>Templating</b>	Peel-n-Stick templates - 2-1/2" x 6" Mounting Hole Pattern
<b>Size</b>	Adjustable 1-5 or Sized 6
<b>Warranty</b>	30 years

<b>Cover</b>	<ul style="list-style-type: none"> <li>Plastic, Standard</li> <li>Metal, Optional</li> </ul>
<b>Fasteners</b>	Self Reaming and Tapping Screws (SRT)
<b>Mounting</b>	Hinge (Pull Side)
<b>Arms</b>	Regular Arm
<b>Finishes/Colors/ Powder Coat</b>	<ul style="list-style-type: none"> <li>Aluminum (689)</li> <li>Statuary Bronze (690)</li> <li>Light Bronze (691)</li> <li>Black (693)</li> <li>Dark Bronze (695)</li> <li>Brass (696)</li> <li>Custom colors optional</li> <li>Optional SRI primer - powder coat only</li> <li>Optional plated finishes</li> </ul>

**Special Templates**

Customized installation templates or products may be available to solve unusual applications. Contact LCN Product Support for assistance.



● AVAILABLE  
○ NOT AVAILABLE

♿ Closer available with less than 5.0 lbs. opening force on 36" door.  
\* Maximum opening/hold-open point with standard template.

# CLOSERS

LCN

LCN

## 4040XP SERIES



4040XP RW/PA AL or DKB or BLK

CALL FOR SPECIAL PRICING

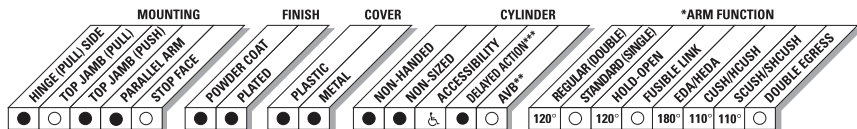
The 4040XP is LCN's most durable and flexible heavy duty closer designed for institutional and other demanding high traffic applications.

<b>Certifications</b>	Grade 1 - ANSI A156.4, UL 10C, ADA, 100 Hour Salt Spray, Meets BAA - Buy American Act
<b>Body Construction</b>	<ul style="list-style-type: none"> <li>■ Cast Iron Body</li> <li>■ Full Complement Bearings</li> <li>■ 1-1/2" Diameter Piston</li> <li>■ 3/4" Diameter Double Heat Treated Pinion Journal</li> </ul>
<b>Fluid</b>	All Weather Liquid X Fluid
<b>Handing</b>	Non-Handed
<b>Templating</b>	Peel-n-Stick templates - 2-1/4" x 5" Mounting Hole Pattern
<b>Size</b>	Adjustable Spring Size 1-6, includes Patented Green Dial
<b>Warranty</b>	30 years

<b>Cover</b>	<ul style="list-style-type: none"> <li>■ Plastic, Standard</li> <li>■ Metal, Optional</li> </ul>
<b>Fasteners</b>	Self Reaming and Tapping Screws (SRT)
<b>Mounting</b>	Hinge (Pull Side), Top Jamb (Push Side), Parallel Arm (Push Side)
<b>Arms</b>	Regular Arm
<b>Finishes/Colors/ Powder Coat</b>	<ul style="list-style-type: none"> <li>■ Aluminum (689)</li> <li>■ Statuary Bronze (690)</li> <li>■ Light Bronze (691)</li> <li>■ Black (693)</li> <li>■ Dark Bronze (695)</li> <li>■ Brass (696)</li> <li>■ Custom colors optional</li> <li>■ Optional SRI primer - powder coat only</li> <li>■ Optional plated finishes</li> </ul>

### Special Templates

Customized installation templates or products may be available to solve unusual applications. Contact LCN Product Support for assistance.



● AVAILABLE  
○ NOT AVAILABLE

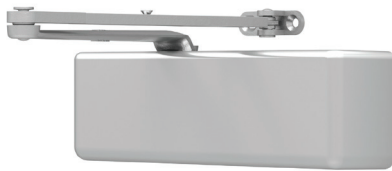
♿ Closer available with less than 5.0 lbs. opening force on 36" door.  
\* Maximum opening/hold-open point with standard template.  
\*\* Advanced Variable Backcheck.  
\*\*\* Delay feature incorporates standard 4040 cylinder (not XP).

# CLOSERS

LCN

LCN

## 4110 SERIES



4110 EDA AL or DKB

**\$354.00**

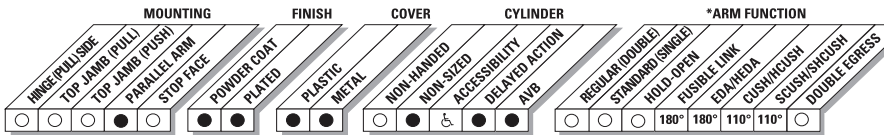
The 4110 is LCN's best performing heavy duty closer designed specifically for institutional and other rugged high traffic applications.

<b>Certifications</b>	Grade 1 - ANSI A156.4, UL 10C, ADA, 100 Hour Salt Spray, Meets BAA - Buy American Act
<b>Body Construction</b>	<ul style="list-style-type: none"> <li>Cast Iron Body</li> <li>Full Complement Bearing</li> <li>1-1/2" Diameter Piston</li> <li>11/16" Diameter Double Heat Treated Pinion Journal</li> </ul>
<b>Fluid</b>	All Weather Fluid
<b>Handing</b>	Handed
<b>Templating</b>	Peel-n-Stick templates - 2-1/2" x 6" Mounting Hole Pattern
<b>Size</b>	Adjustable Spring Size 1-5, or Sized 6, Includes Patented Green Dial
<b>Warranty</b>	30 years

<b>Cover</b>	<ul style="list-style-type: none"> <li>Plastic, Standard</li> <li>Metal, Optional</li> </ul>
<b>Fasteners</b>	Self Reaming and Tapping Screws (SRT)
<b>Mounting</b>	Parallel Arm (Push Side)
<b>Arms</b>	Extra-Duty arm
<b>Finishes/Colors/Powder Coat</b>	<ul style="list-style-type: none"> <li>Aluminum (689)</li> <li>Statuary Bronze (690)</li> <li>Light Bronze (691)</li> <li>Black (693)</li> <li>Dark Bronze (695)</li> <li>Brass (696)</li> <li>Custom colors optional</li> <li>Optional SRI primer - powder coat only</li> <li>Optional plated finishes</li> </ul>

**Special Templates**

Customized installation templates or products may be available to solve unusual applications. Contact LCN Product Support for assistance.



● AVAILABLE  
○ NOT AVAILABLE

⦿ Closer available with less than 5.0 lbs. opening force on 36" door.  
\* Maximum opening/hold-open point with standard template.

## CLOSERS

### NORTON

#### 1600 SERIES

#### ALUMINUM STOREFRONT DOOR CLOSERS

##### REGULAR ARM



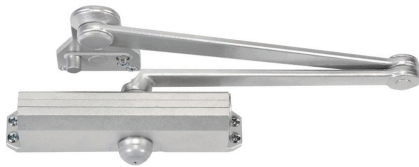
*This is the only pull-side application where a double lever arm is used. It is the most power-efficient application for a door closer. Sufficient frame, door and/or ceiling clearance must be considered. Since the arm assembly projects directly out from the frame, this application may present an aesthetics issues or be prone to vandalism.*

##### TOP JAMB



*For efficiency reasons this application provides the best alternative to the regular arm application. These must be sufficient frame face and/or ceiling clearance for this application. It requires a top rail on the door of just 2-1/8" (54 mm). This application provides the best door control for doors in exterior walls that swing out of a building. The entire closer and arm assembly project from the frame, similar to the regular arm application, where the matters of appearance and malicious abuse can be concern. Consideration must be given to depth of the frame reveal.*

##### PARALLEL ARM



*This application provides the most appealing design appearance for a surface-mounted door closer having a double lever arm. This may also be beneficial in vandalism-prone areas. It is on the push side of the door and the arm assembly extends almost parallel to the door. In the closed position, there is a very little or no hardware projecting beyond the frame face in most situations. Due to the geometry of the arm it is approximately 25% less power-efficient than a regular arm application. The entire closer and arm assembly are mounted below the frame stop, requiring a top rail clearance on the door of between 5-3/8" (137 mm), when using a low-profile arm (1680 series), to 6-3/8" (162 mm), when using the hold open arm.*

**1601 TRI-PACK 689 or 690 or 693**

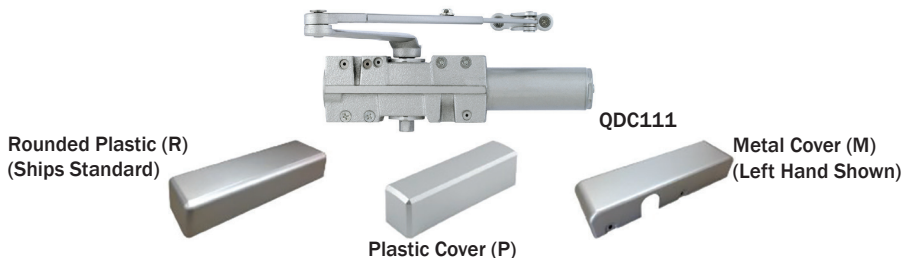
**\$85.00**

## CLOSERS

### DORMA COMMERCIAL

#### QDC 100 SERIES GRADE 1 EXTRA HEAVY-DUTY DOOR CLOSERS

STANLEY



#### PERFORMANCE FEATURES

- Fully adjustable from 1-6 allowing for maximum flexibility.
- All-weather fluid ensures optional performance in multiple climate conditions.
- Delay action and backcheck are standard in the same door closer body.

#### PRODUCT SPECIFICATIONS

- Handing - All QDC100 Series Closer are non-handed (QDC116 arms & metal covers are handed).
- Cast-iron closer body.
- All-weather fluid.
- Stacked valves prevent oil leaks from screws being backed out too far.
- Cover - Metal and plastic covers available.
- Arms & brackets - Tri-Pack standard, additional arms optional.
- Arm material - Heat-treated carbon steel.
- Spring - High - impact hand-drawn steel wires.
- Pinions - Heat-treated chrome molybdenum steel.
- Cylinders construction - Heat-treated free-cutting carbon steel.
- Fasteners - Wood and machine screws standard; sex nuts and self-reaming, self-tapping screws shipped standard.
- Door weights & sizes.

QDC111 689 or 690

**\$145.00**

## CLOSERS

### DORMA COMMERCIAL

#### QDC 300 SERIES GRADE 1 STANDARD-DUTY DOOR CLOSERS



Tri-Pack Arm



Tri-Pack Arm With  
Hold-Open



Heavy Duty With  
Compression Stop



Heavy Duty Arm  
With Hold-Open  
Compression Stop

#### PERFORMANCE FEATURES

- Fully adjustable from 1-6 allowing for maximum flexibility.
- All-weather fluid ensures optional performance in multiple climate conditions.
- Delay action and backcheck are standard in the same door closer body.

#### PRODUCT SPECIFICATIONS

- Handing - All QDC300 Series Closer are non-handed.
- Material - Cast aluminum closer body.
- All-weather fluid.
- Cover - Full, architectural plastic cover also available.
- Arms & brackets - Tri-Pack standard, (regular, top jamb, parallel configurations). Hold open and dead stop arms also available.
- Arm material - Heat-treated carbon steel.
- Spring - High - impact hand-drawn steel wires.
- Pinions - Heat-treated chrome molybdenum steel.
- Cylinders construction - Heat-treated free-cutting carbon steel.
- Fasteners - Wood and machine screws standard; sex nuts and self-tapping, screws shipped standard.
- Door weights & sizes.

QDC311 689 or 690

**\$70.00**



FLAT GOODS



**IVES**

**KICKS DOWN DOOR HOLDERS**

*These units provide an economical method to hold open doors.*

<b>FS452-4 26D</b>	<b>\$20.95</b>
<b>FS452-5 US26D</b>	<b>\$26.00</b>

IVES



**BURNS MANUFACTURING**

**DOOR STOPS**

*The 540 and 541 are heavy rubber stops. 540 & 541 include the 4-1/2" lag bolt & lag shield.*

<b>540</b>	<b>\$42.50</b>
<b>541</b>	<b>\$57.50</b>

BURNS



**IVES**

**FLOOR STOPS**

*Accommodates door undercut up to 2-1/2"*

<b>FS444 26D</b>	<b>\$19.40</b>
<b>FS444 US10B</b>	<b>\$23.65</b>



*Accommodates door undercut up to 2-1/2" with manual holder*

<b>FS446 26D</b>	<b>\$28.30</b>
<b>FS446 US10B</b>	<b>\$35.40</b>



**PLUNGER TYPE DOOR HOLDER**

*The Plunger and internal parts are plated steel and provide a 1-1/4" throw for all types of doors.*

<b>FS1154 26D</b>	<b>\$63.80</b>
-------------------	----------------



**WALL STOPS**

<b>WS407CVX US10B</b>	<b>\$3.30</b>
<b>WS407CVX US32D</b>	<b>\$3.30</b>
<b>WS407CCV US10B</b>	<b>\$3.30</b>
<b>WS407CCV US32D</b>	<b>\$2.50</b>

IVES

FLAT GOODS

ROCKWOOD

ROCKWOOD

OFFSET PULLS



- 90° offset Door Pull 1" Diameter
- 10" CTC US32D finish or 313 finish
- Other CTC and finishes available

BF157 US32D

**\$75.00**

BF157 313

**\$49.00**

KICKPLATES



Armor Plate



Kick Plate



Mop Plate



Stretcher Plate

- K1050 - .050" Thick Metal Kick Plate - Standard Duty

K1050 US32D 10" x 34"

**\$28.95**

K1050 US32D 8" x 34"

**\$23.95**

FLAT GOODS

LATCH-GARD

LG110 SERIES



3" x 11"; Cut out model for cylindrical style locksets;  
Heavy 12 gauge plate steel; Reversible

**110D-DARK BRONZE**

**\$11.50**

**110Z-ZINC**

**\$10.95**

LG160 SERIES



2-5/8" x 12"; Fits Adams Rite Locks; Used On Aluminum Entrance  
Doors; 1-1/2" Cylinder Hole Fits Over Lock

**160D DARK BRONZE**

**\$20.00**

**160Z ZINC**

**\$18.50**

LATCH-GARD

HOUDINI

LUBRICANT



4-Way Lock Lube Contains No Silicones, Teflons, Graphites, Or Oils.  
For All Key, Electric And Combination Locks. 11 Oz Spray Can.

**\$5.95**

HOUDINI

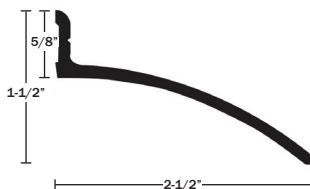
FLAT GOODS

NCP

NATIONAL GUARD PRODUCTS

RAIN DRIP GUARD

16



16A Anodized Aluminum  
16DKB Dark Bronze

16A 40"

**\$17.00**

16A 52"

**\$22.10**

16A 76"

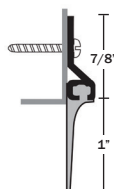
**\$32.30**

16DKB 40"

**\$23.50**

VINYL SWEEP

97V



97V Mill Aluminum  
97VDKB Dark Bronze

97V 36"

**\$7.40**

97VDKB 36"

**\$12.45**

97V 48"

**\$9.85**

97VDKB 48"

**\$16.60**

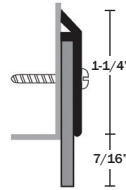
FLAT GOODS

NGP

NATIONAL GUARD PRODUCTS

NEOPRENE SWEEP

200N

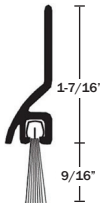


200N Anodized Aluminum  
200NDKB Dark Bronze

200NA 36"	<b>\$13.25</b>
200NA 48"	<b>\$17.70</b>
200NDKB 36"	<b>\$18.00</b>
200NDKB 48"	<b>\$24.00</b>

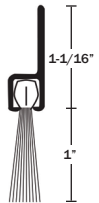
NYLON BRUSH SWEEP

C627 & D608



C627 Anodized Aluminum Gray Brush  
C627DKB Dark Bronze Black Brush

C627A 36"	<b>\$17.55</b>
C627A 48"	<b>\$23.40</b>
C627DKB 36"	<b>\$22.50</b>
C627DKB 48"	<b>\$30.00</b>



D608A Anodized Aluminum Gray Brush  
D608DKB Dark Bronze Black Brush

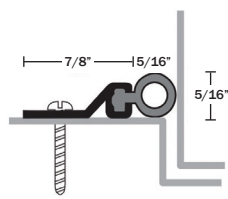
D608A 36"	<b>\$18.40</b>
D608A 48"	<b>\$24.50</b>
D608DKB 36"	<b>\$23.40</b>
D608DKB 48"	<b>\$31.20</b>

FLAT GOODS

N.G.P.

**NATIONAL GUARD PRODUCTS**

**VINYL SEAL  
160V**



160V Mill Aluminum

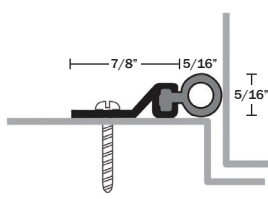
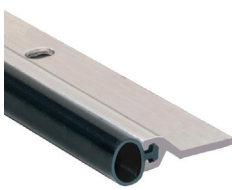
160V 36" x 84"

160V 72" x 84"

**\$28.50**

**\$33.00**

**POLYURETHANE SEAL  
160U**



160U Mill Aluminum

160U 36" x 84"

160U 48" x 84"

160U 72" x 84"

**\$66.30**

**\$70.20**

**\$78.00**

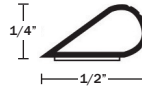
FLAT GOODS

NGP

NATIONAL GUARD PRODUCTS

SILICONE BULB FIRE & SMOKE SEAL

5050



5050C Charcoal

5050C 17'

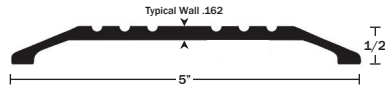
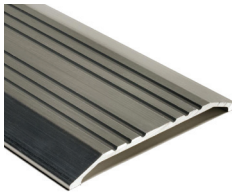
**\$23.10**

5050C 20'

**\$27.15**

SADDLE THRESHOLD

425



Aluminum Mill

425 36"

**\$33.60**

425 48"

**\$44.80**

425 60"

**\$55.95**

425 72"

**\$67.15**

425 96"

**\$89.55**

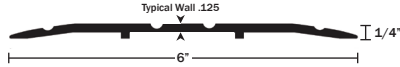
FLAT GOODS

NCP

NATIONAL GUARD PRODUCTS

**SADDLE THRESHOLD**

**613**

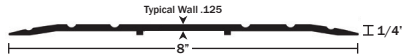
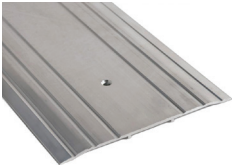


Aluminum Mill  
DKB - Aluminum Dark Bronze

613 36"	<b>\$36.45</b>
613 48"	<b>\$48.60</b>
613 72"	<b>\$72.95</b>
613 96"	<b>\$97.20</b>

**SADDLE THRESHOLD**

**813**



Aluminum Mill  
DKB - Aluminum Dark Bronze

813 36"	<b>\$59.40</b>
813 48"	<b>\$79.20</b>
813 72"	<b>\$118.80</b>



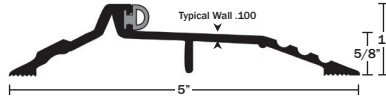
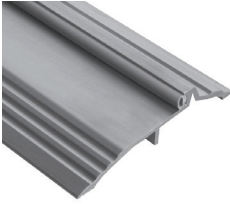
FLAT GOODS

NGP

NATIONAL GUARD PRODUCTS

BUMPER SEAL THRESHOLD

803V

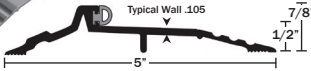
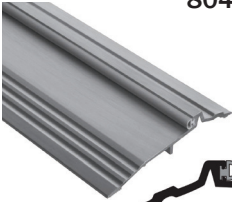


Aluminum Mill  
DKB - Aluminum Dark Bronze

803V 36"	<b>\$40.05</b>
803V 48"	<b>\$53.40</b>
803V 60"	<b>\$66.75</b>
803V 72"	<b>\$80.10</b>

BUMPER SEAL THRESHOLD

804V

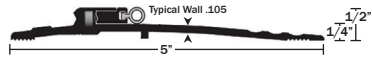


Aluminum Mill  
DKB - Aluminum Dark Bronze

804V 36"	<b>\$38.10</b>
804V 48"	<b>\$50.80</b>
804V 60"	<b>\$63.45</b>
804V 72"	<b>\$76.15</b>

BUMPER SEAL THRESHOLD

896V



Aluminum Mill  
DKB - Aluminum Dark Bronze

896V 36"	<b>\$32.40</b>
896V 48"	<b>\$43.20</b>
896V 72"	<b>\$64.80</b>

FLAT GOODS

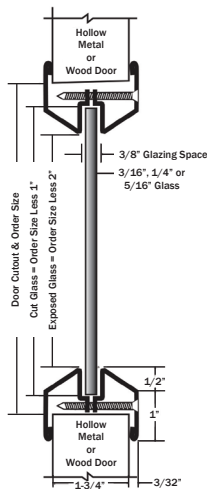
NCP

NATIONAL GUARD PRODUCTS

**LOW PROFILE LITE KIT FOR 1-3/4" THICK DOORS & 3/16", 1/4" or 5/16" GLASS (GLASS NOT INCLUDED)**

L-FRA100

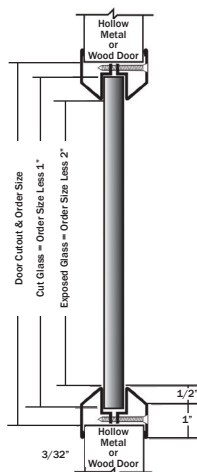
5" x 35" DKB	\$67.80
6" x 27" DKB	\$61.80
7" x 22" DKB	\$57.60
12" x 12" DKB	\$40.20
24" x 24" DKB	\$73.20
24" x 30" DKB	\$81.00
24" x 36" DKB	\$87.60
24" x 60" DKB	\$169.20



**LOW PROFILE LITE KIT FOR 1-3/4" THICK DOORS & 1" THICK GLASS (GLASS NOT INCLUDED)**

L-FRA100-SP

6" x 27" DKB	\$94.20
12" x 12" DKB	\$60.00
24" x 30" DKB	\$121.80



ELECTRIFIED HARDWARE

ADAMS RITE

ADAMS RITE

ELECTRIC STRIKES

7100

Features

Case

1" x 3-3/8" x 1-5/8" deep  
[25.4 mm x 85.7 mm x 41.3 mm deep].

Strike Opening

5/8" x 1-7/16" x 1/2" deep  
[15.9 mm x 36.5 mm x 12.7 mm deep].  
Bolt retaining keeper is stainless steel.  
Strike accepts bolt of any Adams Rite  
4500, 4700 (discontinued), or 4900  
Deadlatch or cylindrical latches.

Strike Lip

Basic strike has lip of proper length for  
1-3/4" [44.5 mm] thick door that closes  
flush with jamb edge. Where door  
thickness or jamb shape differs from this  
standard relationship, lip extension kits are  
available, specified by last dash number.

- Lip extension kits not available  
on 7101 or 7131.

Latchbolt Projection

1/2" to 5/8" [12.7 mm to 15.9 mm]

Standard Package

Individually boxed with mounting screws,  
mounting clips, adhesive shims to  
accommodate jamb or stile extrusion thickness  
greater or less than nominal 1/8" [3.2 mm].

7140 Includes mounting clips and adhesive  
shims for use where welded tabs are omitted.

Shipping Weight

2 lbs [0.91 kg].

Electrical

Voltage

Available in 12, 16, or 24 Volt AC and  
DC. DC continuous units are silent, AC  
intermittent units "buzz" on operation.

Current Draw

0.33A at 12 VDC	1.42A at 12 VAC
0.22A at 16 VDC	0.63A at 16 VAC
0.17A at 24 VDC	0.74A at 24 VAC

Fail Safe | Fail Secure

Field selectable at time of installation.  
However, AC intermittent solenoid must  
not be used continuously in either.

Options

- Available with two Form 'C' monitoring  
switches to indicate when the latchbolt  
is engaged in the strike and whether the  
strike jaw is blocked.  
Not available on 7130/7131, 7140.
- Lip extension kits for various  
dimensions of door centerline to  
jamb edge; for flat faceplates only.  
Not available on 7101 or 7131.
- **Modular Packaging**  
Match one strike body kit with one  
faceplate kit to make a complete electric  
strike. Faceplate kits contain all hardware  
to mount electric strike. Please contact  
factory or sales representative for details.

Faceplate

Available in a variety of architectural finishes.

Model	Dimensions	Finish
7100	1-1/4" x 4-7/8" [31.8 mm x 123.8 mm]	Flat with radius corners
7101	1-1/4" x 4-7/8" [31.8 mm x 123.8 mm]	Radiused to match nose on inactive leaf in a pair of narrow stile doors.
7110	1-7/16" x 7-15/16" [36.5 mm x 201.6 mm]	Flat with radius corners
7111	1-7/16" x 10-1/4" [36.5 mm x 260.4 mm]	Flat with radius corners
7130	1-1/4" x 6-7/8" [31.8 mm x 174.6 mm]	Flat with radius corners
7131	1-1/4" x 6-7/8" [31.8 mm x 174.6 mm]	Radiused to match nose on inactive leaf in a pair of narrow stile doors
7140	1-1/4" x 4-7/8" [31.8 mm x 123.8 mm]	Flat with square corners

7130/7131: Large 6-7/8" faceplate is designed  
to cover strike opening when converting from  
an MS® pivoted-bolt deadlock to deadlatch.



7100



7130

7100 628 12VDC or 24VDC

\$129.10

7130 628 24AC or 24DC

\$132.00

## ELECTRIFIED HARDWARE

HES

### HES

#### ELECTRIC STRIKE

1006

**WORKS WITH ALL CYLINDRICAL & MORTISE LOCKSETS WITH OR WITHOUT A DEADBOLT**

**THE STRONGEST, MOST VERSATILE ELECTRIC STRIKE AVAILABLE.**



*The HES 1006 Series Electric Strike is the strongest and most versatile electric strike available. The dual interlocking plunger design and heavy duty stainless steel construction enables it to exceed every standard developed for electric strikes. With multiple faceplate options, the HES 1006 will fully accommodate every lock designed to work within an ANSI 4-7/8" strike plate. Tested to exceed 3,000 lbs of static strength, 350 ft-lbs of dynamic strength and factory tested to exceed 1 million cycles of operation, the HES 1006 is in a class of its own.*

#### FEATURES

- Stainless steel construction
- Tamper resistant
- Static strength 2,500 lbs
- Dynamic strength 350 ft-lbs (fail secure)
- Endurance 1 million cycles
- Fail secure (standard)
- Non-handed
- Accommodates up to 1" (25.4 mm) deadbolt
- Full keeper shim for horizontal adjustment
- Plug-in connector
- Trim enhancer
- Strike body depth 1-11/16" (43 mm)
- SecuriCare five-year, no fault, no questions asked warranty (Addition of HES SMART Pac® III extends the warranty to 10 years)

#### OPTIONAL FEATURES

- LBM Latchbolt monitor
- LBSM Latchbolt strike monitor
- Fail safe
- Interchangeable faceplates
- Monitor switches may not work with all faceplate options

#### ACCESSORIES

- HES-CUT-MTK Metal template kit
- 2005M3 SMART Pac® III
- 1000-102 Rain guard
- 1006-103 Full keeper shims
- 1000-104 Lip extension trim adapter
- 1006-105 Trim enhancer BLK (goof plate)
- 1006-109 Trim adapter
- 100-110 Replacement strike plate
- 100-130 KD filler plate
- 150 Strike latch guard

1006CLB 630

**\$335.00**

# ELECTRIFIED HARDWARE

HES

## HES

### ELECTRIC STRIKES

5000



**WORKS WITH ALL CYLINDRICAL LOCKSETS UP TO A 5/8" THROW LATCHBOLT**

**THE GRADE 1, LOW-PROFILE SOLUTION FOR CYLINDRICAL LOCKSETS.**

*The HES 1006 Series Electric Strike is a compact, high performance electric strike designed for low profile openings where there is limited space behind the jamb. Its strength is derived from a unique keeper pin locking design, enabling the HES 5000 to exceed the rating of the frame, door and locking hardware. The field selectable fail safe/fail secure unit is easy to install and accommodates latchbolts up to 5/8" throw.*

#### FEATURES

- Tamper resistant
- Static strength 1,500 lbs
- Dynamic strength 70 ft-lbs (fail secure)
- Endurance 1 million cycles
- Field selectable fail safe/fail secure
- Non-handed
- Internally mounted solenoid
- Accommodates 1/2"- 5/8" (12.7 mm - 15.9 mm) latchbolt (5/8" {15.9 mm} with 1/8" {3.2 mm} door gap)
- Strike body depth 1-1/16" (27.3 mm)
- Plug-in connector
- Trim enhancer included
- SecuriCare five-year, no fault, no questions asked warranty (Addition of HES SMART Pac® III extends the warranty to 10 years)

#### OPTIONAL FEATURES

- LBM Latchbolt monitor

#### ACCESSORIES

- 150 Strike latch guard
- HESCUT-MTK Metal template kit
- 2001M Plug-in bridge rectifier
- 2004M ElectroLyn® adapter
- 2005M3 SMART Pac® III
- 2006M Plug-in buzzer
- 5104-1/2 1/2" (12.7 mm) stackable lip extension
- 5104-1 1" (25.4 mm) stackable lip extension
- 5104-1-1/4" 1-1/4" (32 mm) stackable lip extension

5000C 630

**\$105.00**

## ELECTRIFIED HARDWARE

HES

**HES**

### **ELECTRIC STRIKE**

**8000**

**WORKS WITH CYLINDRICAL LOCKSETS AND ACCOMMODATES LATCHBOLTS UP TO 5/8" THROW**

**THE CONCEALED ELECTRIC STRIKE SOLUTION FOR CYLINDRICAL LOCKSETS.**



*The HES 8000 Series Electric Strike is a compact, high performance electric strike featuring a unique concealed design for use with cylindrical locksets. No cutting in the frame is required. Simply remove the existing strike plate, adjust the vertical alignment feature to the latchbolt centerline and install. Its strength is derived from a unique keeper pin locking design, enabling the HES 8000 to exceed the ratings of the frame, door and locking hardware. This field selectable fail safe/fail secure unit is easy to*

*install and accommodates latchbolts up to 5/8" throw.*

#### **FEATURES**

- No cutting on frame required
- Vertical adjustability to accommodate door sag and misalignment
- Tamper resistant
- Static strength 1,500 lbs
- Dynamic strength 70 ft-lbs
- Endurance 1 million cycles
- Field selectable fail/fail secure
- Non-handed
- Internally mounted solenoid
- Accommodates 1/2" - 5/8" (12.7 mm - 15.9 mm) cylindrical latchbolt (5/8" [15.9 mm] with 1/8" [3.175 mm] door gap)
- Strike body depth 1-1/16" (27.3 mm)
- Strike body width 1-7/16" (36.5 mm)
- Plug-in connector

#### **FEATURES**

- SecuriCare five-year, no fault, no questions asked warranty (Addition of HES SMART Pac® III extends the warranty to 10 years)

#### **OPTIONAL FEATURES**

- LBM Latchbolt monitor

#### **ACCESSORIES**

- 2001M Plug-in bridge rectifies
- 2004M ElectroLynx® adapter
- 2005M3 SMART Pac® III
- 2006M Plug-in buzzer

**8000C 630**

**\$120.00**

ELECTRIFIED HARDWARE

HES

HES

**SURFACE MOUNTED ELECTRIC STRIKES**

9400

**WORKS WITH RIM EXIT DEVICES UP TO 1/2" THROW LATCHBOLT**



**THE SLIM-LINE, SURFACE MOUNTED SOLUTION.**

*The HES 9400 Series Electric Strike is a slim-line, surface mounted electric strike designed to accommodate rim exit devices with a 1/2" throw Pullman latchbolt. All components are completely encased within its 1/2" thick stainless steel housing, so no cutting on the frame is required for installation. Simply place the electric strike on the surface of the frame, align it with the exit latchbolt, and install.*

**FEATURES**

- Installs in metal and wood frames
- Wood screws not provided
- One 1/8" (3.2 mm) spacer plate included
- Decorative cover for sleek look
- Stainless steel construction
- Tamper resistant
- Static strength 1,500 lbs
- Dynamic strength 70 ft-lbs
- Endurance 1 million cycles
- Field selectable fail safe/fail secure
- Horizontal adjustability
- Non-handed
- Internally mounted solenoid
- Accommodates up to 1/2" (12.7 mm) Pullman latch
- SecuriCare five-year, no fault, no questions asked warranty (addition of HES SMART Pac® III extends the warranty to 10 years)

**OPTIONAL FEATURES**

- LBM Latchbolt monitor
- LBSM Latchbolt strike monitor

**ACCESSORIES**

- 9000-116-xxx 1/16" Spacer plate (Available in 613E, 628E, 630 & BSP finishes)
- 9000-108-xxx 1/8" Spacer plate (Available in 613E, 628E, 630 & BSP finishes)
- 9000-MTX Metal template kit
- SMB Surface mounting box
- 2001M Plug-in bridge rectifier
- 2004M ElectroLynx® adapter
- 2005M3 SMART Pac® III
- 2006M Plug-in buzzer
- 9000-ASB-XXX Aluminum spacer bracket (Available in 613E, 628E, 630 & BSP finishes)
- BN-250 1/4-20 Blind nuts

9400 630

**\$275.00**

ELECTRIFIED HARDWARE

HES

HES

**SURFACE MOUNTED ELECTRIC STRIKE**

9500

WORKS WITH RIM EXIT DEVICES UP TO 3/4" THROW  
PULLMAN LATCHBOLT



**THE DURABLE FIRE RATED SURFACE MOUNTED SOLUTION.**

*The HES 9500 Series Electric Strike is a three hour fire rated, surface mounted electric strike designed to accommodate rim exit devices with a 3/4" throw Pullman latchbolt. All components are completely encased within its 3/4" thick stainless steel housing, so no cutting on the frame is required for installation. Simply place the electric strike on the surface of the frame, align it with the exit latchbolt and install. Adjustments have never been easier as the base is now separate from the cover. The HES 9500*

*exceeds Grade 1 standards for strength and performance. It is field selectable for fail safe/fail secure operation, and for 12 or 24 VDC. This unique electric strike complies with NFPA 80-07 guidelines for retrofit into fire rated frame.*

**FEATURES**

- Installs in metal or wood frames (wood screws not included)
- Separate base and decorative cover for easy adjustments
- Stainless steel construction
- Tamper resistant
- Static strength 1,500 lbs
- Dynamic strength 70 ft-lbs
- Endurance 1 million cycles
- Field selectable fail safe/fail secure
- Horizontal adjustability
- Non-handed
- Internally mounted solenoid
- Accommodates up to 3/4" (19 mm) Pullman latch

**FEATURES**

- SecuriCare five-year, no fault, no questions asked warranty (Addition of HES SMART Pac® III extends the warranty to 10 years)

**OPTIONAL FEATURES**

- LBM Latchbolt monitor
- LBSM Latchbolt strike monitor

**ACCESSORIES**

- 9000-116-XXX 1/16" Spacer (Available in 613E, 628E, 630 & BSP finishes)
- 9000-108-XXX 1/8" Spacer plate (Available in 613E, 628E, 630 & BSP finish)
- 9000-MTK Metal template kit
- SMB Surface mounting box
- 2001M Plug-in bridge rectifier
- 2004M ElectroLynx® adapter
- 2005M3 SMART Pac® III
- 2006M Plug-in buzzer

9500 630

**\$319.95**



# ELECTRIFIED HARDWARE

## HES

HES

### SURFACE MOUNTED ELECTRIC STRIKES

9600

**WORKS WITH RIM EXIT DEVICES UP TO 3/4" THROW PULLMAN LATCHBOLT**



**THE STYLISH WINDSTORM RESISTANT, SURFACE MOUNTED SOLUTION.**

*The HES 9600 Series Electric Strike is a windstorm resistant, surface mounted electric strike designed to accommodate rim exit devices with a 3/4" throw Pullman latchbolt. All components are completely encased within its 3/4" thick stainless steel housing, so no cutting on the frame is required for installation. Simply place the electric strike on the surface of the frame, align it with the exit latchbolt and install. Adjustments have never been easier as the base is now separated from the cover. It is field*

*selectable for fail secure or fail safe operation, and for 12 or 24 VDC. The HES 9600 is a surface mounted electric strike designed with the strength and durability required to exceed the severe forces of ANSI Windstorm testing.*

#### FEATURES

- Installs in metal and wood frames (wood screws not included)
- Separated base and decorative cover for easy adjustments
- Stainless steel construction
- Tamper resistant
- Static strength 2,000 lbs
- Dynamic strength 120 ft-lbs
- Endurance 1 million cycles
- Field selectable fail safe/fail secure
- Horizontal adjustment
- Non-handed
- Internally mounted solenoid
- Accommodates up to 3/4" (19 mm) Pullman latch
- SecuriCare five-year, no fault, no questions asked warranty (Addition of HES)

9600 630

#### FEATURES

SMART Pac® III extends the warranty to 10 years)

#### OPTIONAL FEATURES

- LBM Latchbolt monitor
- LBSM Latchbolt strike monitor

#### ACCESSORIES

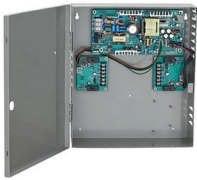
- 9000-116-xxx 1/16" Spacer plate (Available in 613E, 628E, 630 & BSP finishes)
- 9000-108-xxx 1/8" Spacer plate (Available in 613E, 628E, 630 & BSP finishes)
- 9000-MTX Metal template kit
- SMB Surface mounting box
- 2001M Plug-in bridge rectifies
- 2004M ElectroLynx® adapter
- 2005M3 SMART Pac® III
- 2006M Plug-in buzzer
- 9000-ABS-XXX Aluminum spacer bracket (Available 613E, 628E, 60 & BSP finishes)

**\$275.00**

ELECTRIFIED HARDWARE

VON DUPRIN

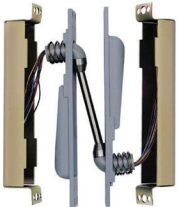
VON DUPRIN



**POWER SUPPLY**

*Two zone controller provides 2 inputs and 2 outputs. Will operate one to two EL (electric latch) devices. Options available*

- PS902** **\$194.15**
- PS914** **\$557.15**
- PS914-2RS** **\$690.25**
- PS914-4RL** **\$917.40**



**ELECTRIC POWER TRANSFER**

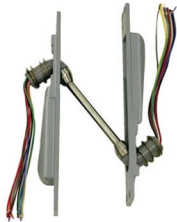
*Provides a mean of transferring electrical power from a door frame to the edge of a swinging door.*

**EPT-2 2-18 GA. WIRES**

- SP 313** **\$362.45**
- SP28** **\$362.45**

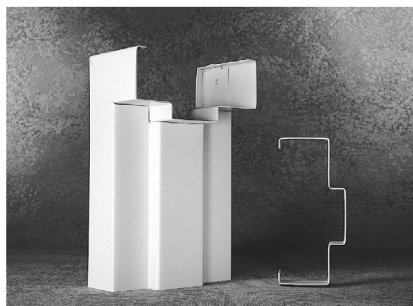
**EPT-10 10-24 GA. WIRES**

- SP 313** **\$385.55**
- SP28** **\$385.55**



# HOLLOW METAL

## STEELCRAFT F SERIES



### About the product

F Series 3-sided flush frames are designed to meet requirements for light to maximum duty applications in both commercial and institutional buildings. They are installed in both interior and exterior locations, and in virtually all types of buildings and wall constructions. These frames are to be installed as part of the wall framing sequence. They can be specified and supplied as KD (knock-down) for field assembly prior to installation or welded for installation as a complete unit.

### Installation

1. Installation shall conform to the published Steelcraft installation instructions, ANSI A250.11-2001 (formerly SDI 105) *Recommended Erection Instructions for Steel Frames and HMMA 840*.
2. Fire Rated Assemblies must be in accordance with NFPA Pamphlet 80. The *Authority Having Jurisdiction* is the final authority in issues related to the installation and use of installed Fire Rated Doors.

### Frame applications

Profile	Steel thickness	Wall construction	Typical wall anchors
F16	16 Gauge [0.053" (1.3mm)]	Wood or steel stud	Lock-in stud anchor
F16	16 Gauge [0.053" (1.3mm)]	Masonry	Wire masonry
F16	16 Gauge [0.053" (1.3mm)]	Existing masonry	Bolted through soffit
F14	14 Gauge [0.067" (1.7mm)]	Wood or steel stud	Lock-in stud anchor
F14	14 Gauge [0.067" (1.7mm)]	Masonry	Wire masonry
F14	14 Gauge [0.067" (1.7mm)]	Existing masonry	Bolted through soffit
F12	12 Gauge [0.093" (2.3mm)]	Wood or steel stud	Lock-in stud anchor
F12	12 Gauge [0.093" (2.3mm)]	Masonry	Wire masonry
F12	12 Gauge [0.093" (2.3mm)]	Existing masonry	Bolted through soffit

### Features and benefits

Steelcraft F Series flush frames offer the following unique features, which enhance long term functionality and durability:

1. **Die-mitered corner connections:** Die-mitered corner connection at the head and jamb insure an attractive, tight and closed mitered connection. The miter includes 4 corner tabs designed with concealed connection eliminating the need for continuous profile welding.
2. **Patented universal hinge preparations** allow for easy field conversion from standard weight .134" (3.3mm) thick hinges to heavy weight .180" (4.7mm) hinges.
3. **Adjustable base anchors** allow for installation adjustment when the floor is not level.
4. **Factory prepared** for field installed silencers.
5. **Factory applied baked on rust inhibiting primer** in accordance with ANSI A250.10-1998 (R2004).

### Specification compliance

1. Overall frame construction for the Steelcraft F Series flush frames meets the requirements of ANSI A250.8-2003 (commonly referred to as SDI-100).
2. Hardware preparations and reinforcements are in accordance with ANSI A250.6-2003. Locations are in accordance with ANSI/DHI A115.

### Fire ratings

The F Series flush frames meet the broadest fire rating requirements. They are listed for installations requiring compliance to both neutral pressure testing (ASTM E152 and UL 10B) and positive pressure standards (UL 10C). Refer to the **Fire Rated Section** of this manual for particular listings.

### Applications

F Series frames are typically installed in wall construction types as defined in the chart below:

# HOLLOW METAL

## DOORS AND FRAMES

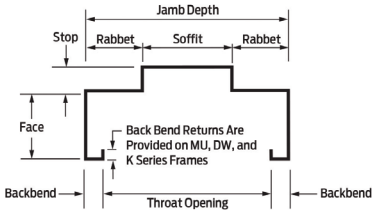
STEELCRAFT

### Profile terminology

The frame profile has specific terminology related to each surface. Their jamb depth describes the frame size required.

It is critical that the throat opening of the frame be compatible with the wall to which it will be attached.

#### Double rabbet: standard profile



### Profile variations

Steel frames are supplied standard as double rabbet. To accommodate various application needs, the frame profile (in any frame series) can change. Some of the typical variations are as follows:



**Single rabbet:** Jamb depths below 4-1/2" (114mm) are single rabbet due to the dimensional limitations of the profile. Some specifications will require single rabbet profiles on frames over 4-1/2" (114mm) in jamb depth.

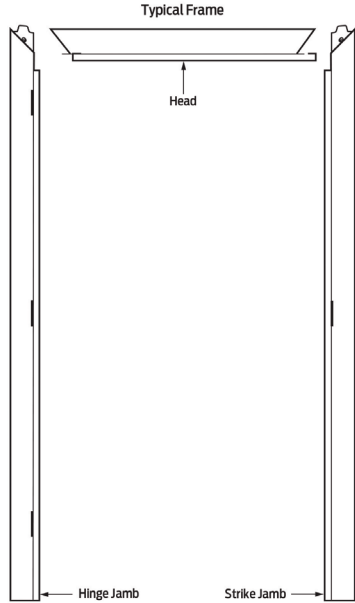
Profile as shown will vary on MU, DW, and K Series frames, refer to the appropriate data sheets.



**Cased open:** Used for double acting doors (swinging in both directions), sliding doors, bi-fold doors or frames used to close-off an opening in a wall when a door is not required.



**Double egress:** This is a frame specifically designed for cross corridor applications where traffic control is required. **This frame is not available in the Drywall Series (DW and T) or Multi-Use Series (MU).**



### Anchors

Frames must be anchored to the applicable wall construction. Wall construction at door openings must be of sufficient construction to support commercial or institutional grade steel doors and frames. Refer to the appropriate frame data sheets since anchor types will vary with frame constructions and noted in this manual. Basic guidelines is as follows:

#### Flush frames:

- **Base anchors:** one located at the bottom of each jamb
- **Jamb anchors:** Locate anchors near each hinge location in both hinge and strike jambs. Transom frames require additional anchors above the top hinge.
- **Head anchors:** For wide frame openings usually over 60" in width, an anchor located in the center of the frame head is recommended

#### Drywall frames:

- **Base anchors:** two (2) located at the bottom of each jamb
- **Jamb anchors:** Drywall frame includes an adjustable compression anchor near the top of each jamb

## HOLLOW METAL

### STEELCRAFT L SERIES



#### About the product

The L20, L18, and L16 Series flush doors are designed to meet the architectural requirements for full flush doors. The L14 Series flush doors are designed to meet the architectural requirements for maximum duty full flush doors. Refer to the Architectural section for specifications and the selection and usage guide of the appropriate door constructions.

This premium door construction combines the strength and dimensional stability of steel with the structural integrity of the laminate core. The continuous bonding of core to steel face sheets provides an attractive, flat door, free of face welding marks. Tests have proven that the L Series door has high resistance to impact damage, low thermal conductivity and high STC ratings.

To meet application, specification and performance requirements, the L Series door offers a wide range of specifiable options including sizes, glass light designs and hardware (mechanical, pneumatic, electrical) preparations. L Series doors are 1 3/4" (45 mm) thick.

#### Installation

1. Installation shall conform to the published Steelcraft installation instructions, ANSI A250.11-2012 (formerly SDI 105) Recommended Erection Instructions for Steel Frames and HMMMA 840s.
2. Fire Rated Assemblies must be in accordance with NFPA Pamphlet 80. The Authority Having Jurisdiction is the final authority on issues related to the installation and use of installed Fire Rated Doors.

#### Features and benefits

Steelcraft's L Series doors offer the following standard unique features, which enhance long term performance and durability:

1. **Core Systems** that enhance the structural integrity of the door:
  - **Honeycomb (standard):** 1" (25 mm) cell kraft honeycomb configuration that increases structural integrity while reducing overall weight
  - **Polystyrene (optional):** enhanced thermal performance
  - **Polyurethane (optional):** extreme thermal performance
2. **Full Height, Epoxy Filled Mechanical Interlock Edges** provide structural support and stability the full height of the door edges. Available edge options:
  - **Visible Edge Seam (standard):** full height, epoxy filled mechanical interlocked edges
  - **Filled Edge Seam (optional add to standard):** seam filled with structural adhesive and dressed smooth. Includes tack welds above and below edge cutouts for hinges, locks, etc.
  - **Welded Edge Seam (optional add to standard):** intermittently welded using 1" long welds, then seam filled with structural adhesive and dressed smooth. Option available on L18, L16 and L14 doors.
3. **Universal Hinge Preparations** (patented) allow for easy field conversion from standard weight .134" (3.3 mm) hinges to heavy weight .180" (4.7 mm) hinges.
4. **14 Gauge [0.067" (1.7 mm)] Inverted Top and Bottom Channels** provide stability and protection for the top and bottom edges from abuse.
5. **Beveled Hinge and Lock Edges** allow for tighter installation tolerances, ensure easier operation and eliminate binding and sticking.
6. **Recessed Designer™ Glass Trim** provides a clean, neat and flush finish with the door surface.
7. **Factory Applied Baked-On Rust Inhibiting Primer** paint in accordance with ANSI A250.10-2011.

#### Specification compliance

1. Door construction for Steelcraft L Series full flush doors meets the requirements of ANSI A250.8-2017 (SDI 100).
2. Hardware preparations and reinforcements are in accordance with ANSI A250.6-2003 (R2009). Locations are in accordance with ANSI/DHI A115 unless otherwise stated.

#### Fire ratings

L Series doors meet the broadest fire rating requirements. They are listed for installations requiring compliance to both neutral pressure testing (ASTM E152 and UL-10B) and positive pressure standards (UL-10C).

# HANDING CHART

HANDING

## HANDING

### Handing procedures diagrams

To determine the hand of a door, view the door from the outside (the side that hinges are on is the hand of the door).

- If the door swings away from the viewer, the hand is regular hand, i.e., right or left hand.
- If the door swings to the viewer, the door is reverse swing, i.e., right hand reverse swing or left hand reverse swing.

All Steelcraft Doors and Frames are handed according to the following chart:

<p><b>Right Hand Door (swing in) Right Hand Frame</b></p>	<p><b>Left Hand Door (swing in) Left Hand Frame</b></p>
<p><b>Right Hand Reverse Bevel Door (swing out) Left Hand Frame</b></p>	<p><b>Left Hand Reverse Bevel Door (swing out) Right Hand Frame</b></p>
<p><b>Pair of Doors – LH Active (swing in) Double Door Frame – LH Active</b></p>	<p><b>Pair of Doors – RH Active (swing in) Double Door Frame – RH Active</b></p>
<p><b>Pair of Doors – LHRB Active (swing out) Double Door Frame – RH Active</b></p>	<p><b>Pair of Doors – RHRB Active (swing out) Double Door Frame – LH Active</b></p>

K - indicates Key side of the active door

## CONTACT INFORMATION

**STEVE HAHN**  
*Division Manager*  
shahn@jhcomaha.com  
402.444.1660

**JEROD ERICKSON**  
*Sales Consultant*  
jerickson@jhcomaha.com  
402.444.1668

**TIM CRUZ**  
*Marketing/Sales Consultant*  
tcruz@jhcomaha.com  
402.444.1689

CONTACT INFORMATION

NOTES

NOTES

A large grid area for taking notes, with a vertical line on the left side and a horizontal line at the top. The grid is mostly empty, with a faint watermark of the word 'OWH' visible in the center.



NOTES

NOTES

A large grid area for taking notes, with a faint 'OWH' watermark in the center.

NOTES

NOTES

A large grid area for taking notes, with a vertical line on the left side and a horizontal line at the top. The grid is mostly empty, with a faint watermark of the word 'OWH' visible in the center.

## LINE SHEET

### ALLEGION

- Falcon
- Glynn- Johnson
- Ives
- LCN
- Schlage
- Schlage Electronics
- Schlage Residential
- Von Duprin
- Zero

### ASSA ABLOY

- Accentra/Yale
- Adams Rite
- Emtek
- Folger Adams
- HES
- Markar
- McKinney
- Medeco
- Norton
- Pemko
- Rixson
- Rockwood
- Sargent
- Securitron

### DORMAKABA

- Best
- Best Door Closers
- Best Hinges
- Dorma Architectural
- Dorma Commercial
- Precision
- Simplex

**RETURN POLICY:** Stock items are subject to a 25% restocking fee. Special order product is subject to vendor approval and additional restock fees will apply.

### MISCELLANEOUS

- ABH
- Accurate
- Detex
- Don-Jo
- Global
- Hager
- Ilco
- Jet
- Johnson Sliding Door Hardware
- Kwikset
- Master
- NGP
- PDQ
- RCI
- Reese
- Select
- Trimco

### HOLLOW METAL

- Ceco
- RediFrame
- Steelcraft
- Timely

### WOOD DOORS

- Marshfield
- Masonite
- VT Industries

# OMAHA

WHOLESALE HARDWARE

P.O. Box 3628  
Omaha, Nebraska 68103

- Free shipping on orders over \$1000

OWH